

Prostorni informacijski sustavi

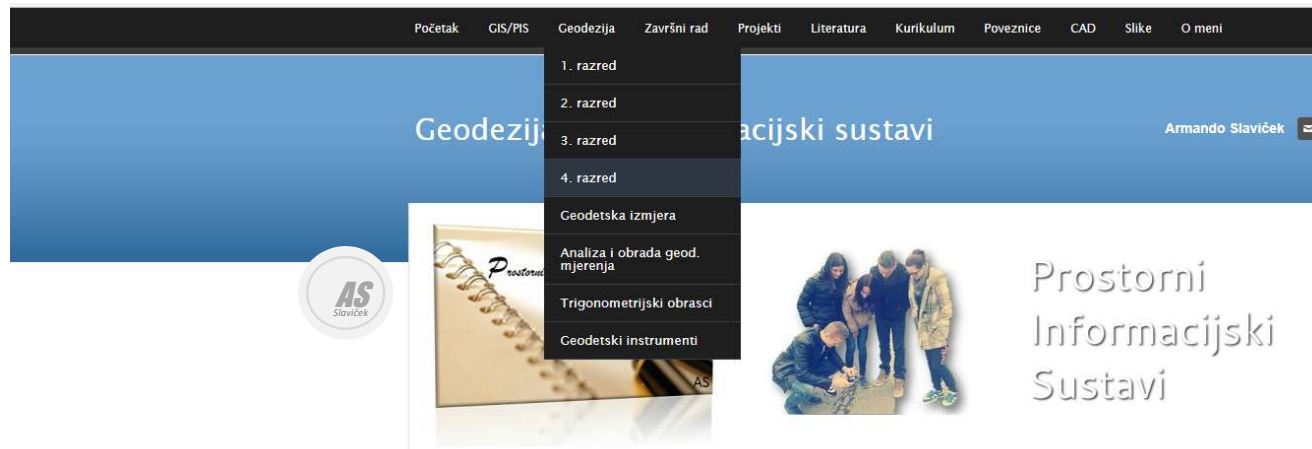
Topologija - zadatak



Define Topology Query

Armando Slaviček

<http://geoskolazg.weebly.com>



Primjena i održavanje PIS-a

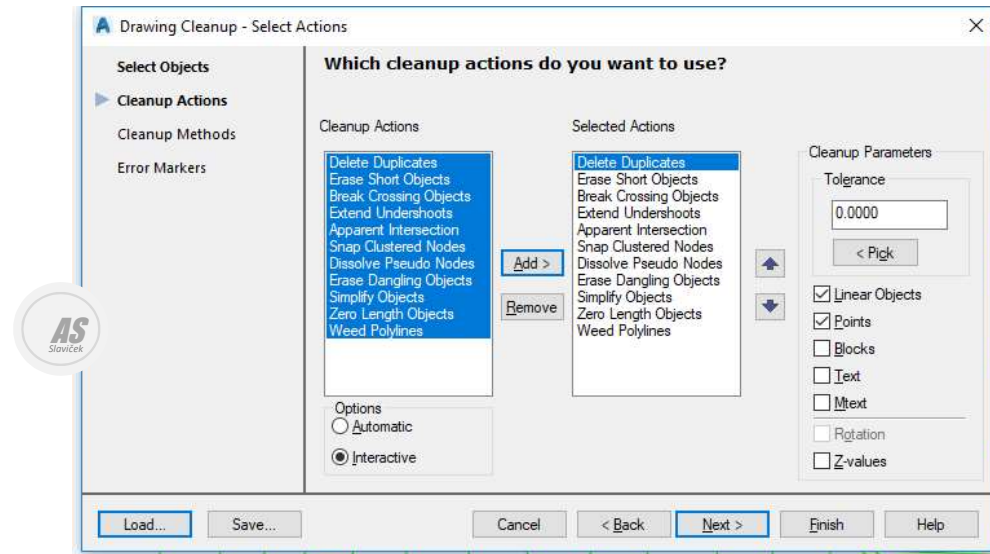
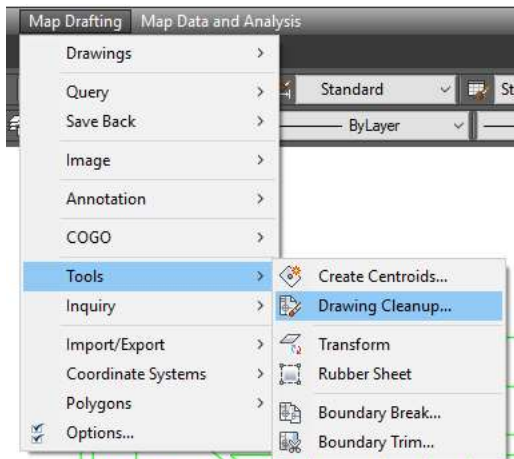
Primjena i održavanje PIS-a

The screenshot shows a web application interface with a navigation bar at the top containing five tabs: 'Primjena PIS-a', 'Literatura', 'Prezentacije', 'Zadaci', and 'Projekti'. The 'Primjena PIS-a' tab is active. Below the navigation bar, there is a main content area. On the left, there is a card with a diagram showing a flow from '313314' to a red box with 'A' and a database icon, with the text 'TEST' and 'A. Slaviček' below it. On the right, there is a red-bordered box containing a file icon and the text 'KO_TUHELJ_ZADATAK_1.dwg' and 'Download File'. Below this, there is a section titled 'Programi' with a list of links: 'QuikGrid', 'TCXConverter', and 'Find Altitude on Map'. To the right of the 'Programi' section is a circular logo with 'AS' and 'Slaviček' inside.

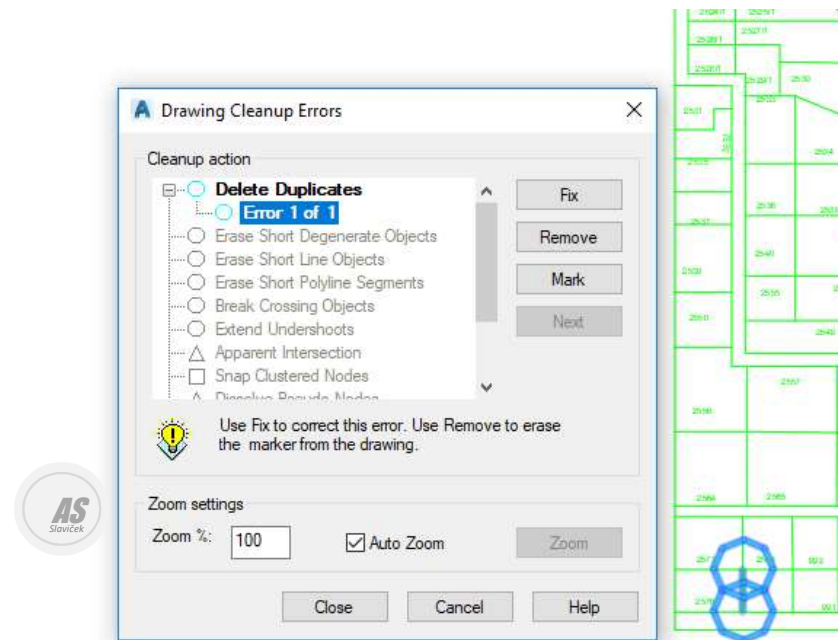
KO Tuhelj - zadatak



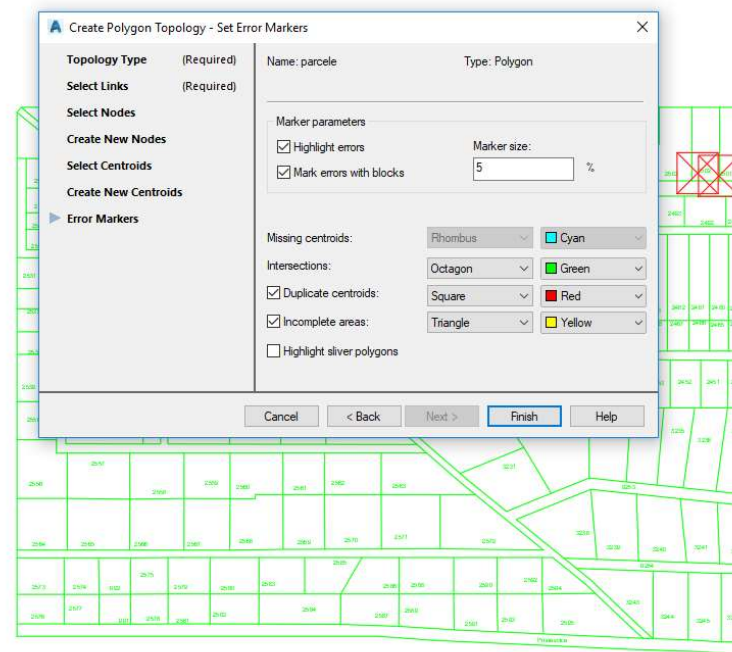
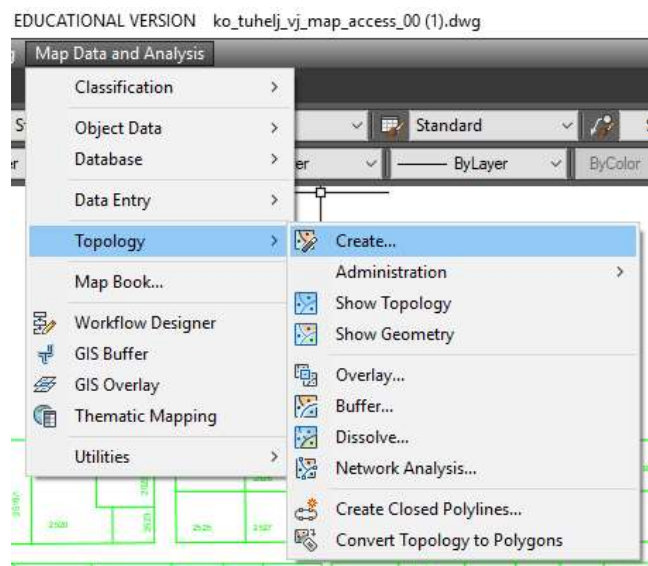
Map Drafting/Tools/Drawing Cleanup



Map Drafting/Tools/Drawing Cleanup



Map Data and Analysis/Topology/Create



Create Topology

Create Polygon Topology - Select Links

Topology Type (Required) Name: parcele Type: Polygon

Select Links (Required)

Select Nodes
 Create New Nodes
 Select Centroids
 Create New Centroids
 Error Markers

Select the links you want to include in the topology. You can include all links or select them manually in your map. If you want to filter link selection, use the Layers and Object Classes options.

Select all Select manually: +/-

Layers:

Object classes:

497 objects selected, 186 filtered out

Cancel < Back Next > Finish Help

Create Polygon Topology - Select Centroids

Topology Type (Required) Name: parcele Type: Polygon

Select Links (Required)

Select Nodes
 Create New Nodes
 Select Centroids
 Create New Centroids
 Error Markers

Select the centroids you want to include in the topology. You can include all centroids or select them manually in your map. If you want to filter centroid selection, use the Layers, Block Names, and Object Classes options.

Select all Select manually: +/-

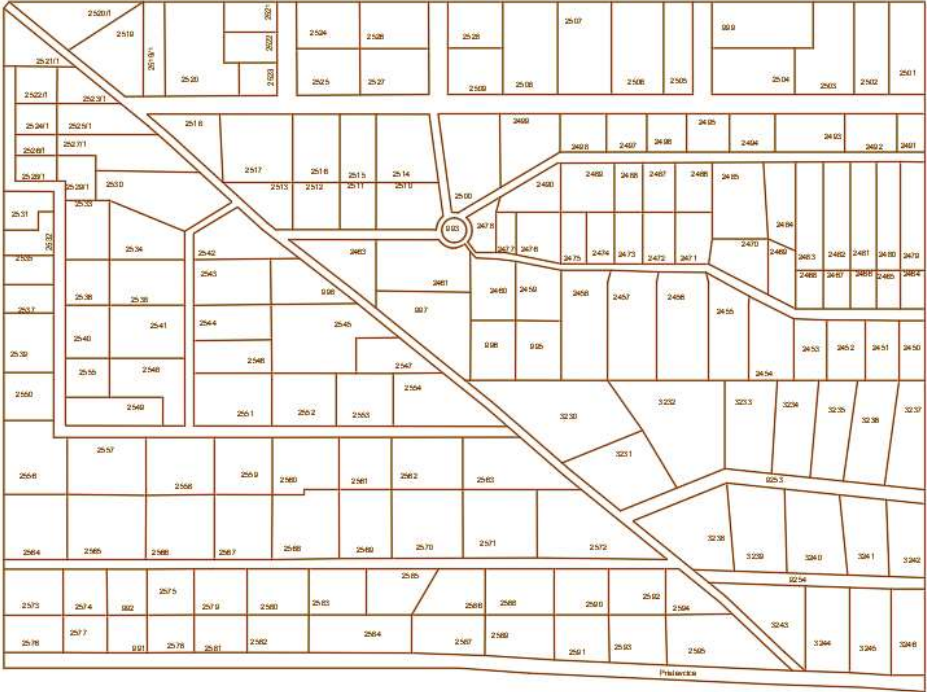
Layers:

Block names:

Object classes:

183 objects selected, 500 filtered out

Cancel < Back Next > Finish Help



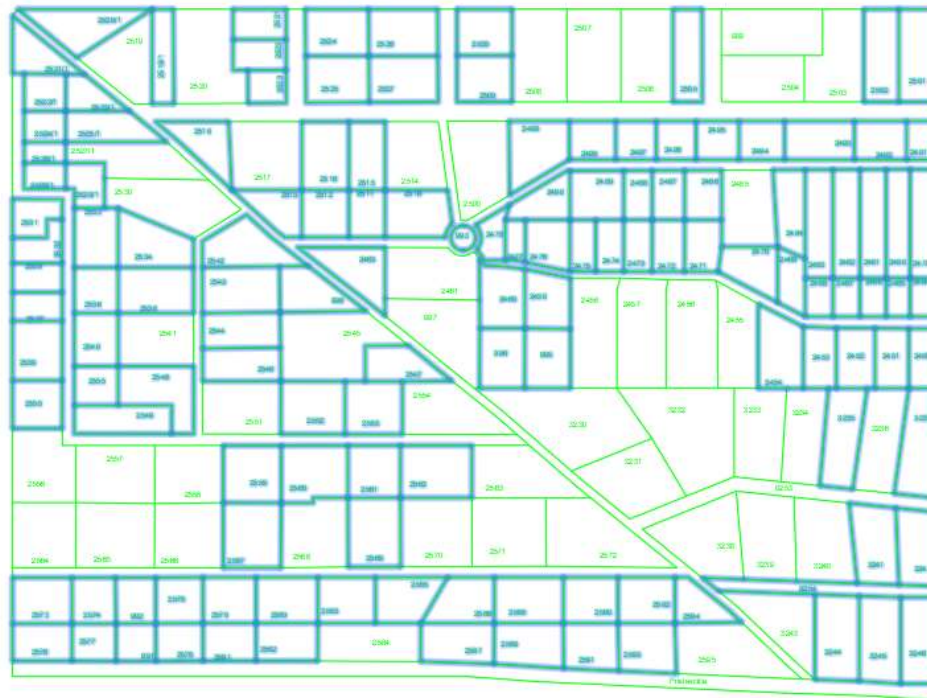
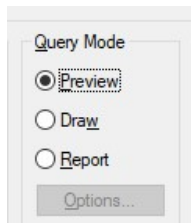
Map Drafting/Query/Define Topology Query...

The image displays a workflow in AutoCAD for defining a topology query and setting hatch properties. It includes the following components:

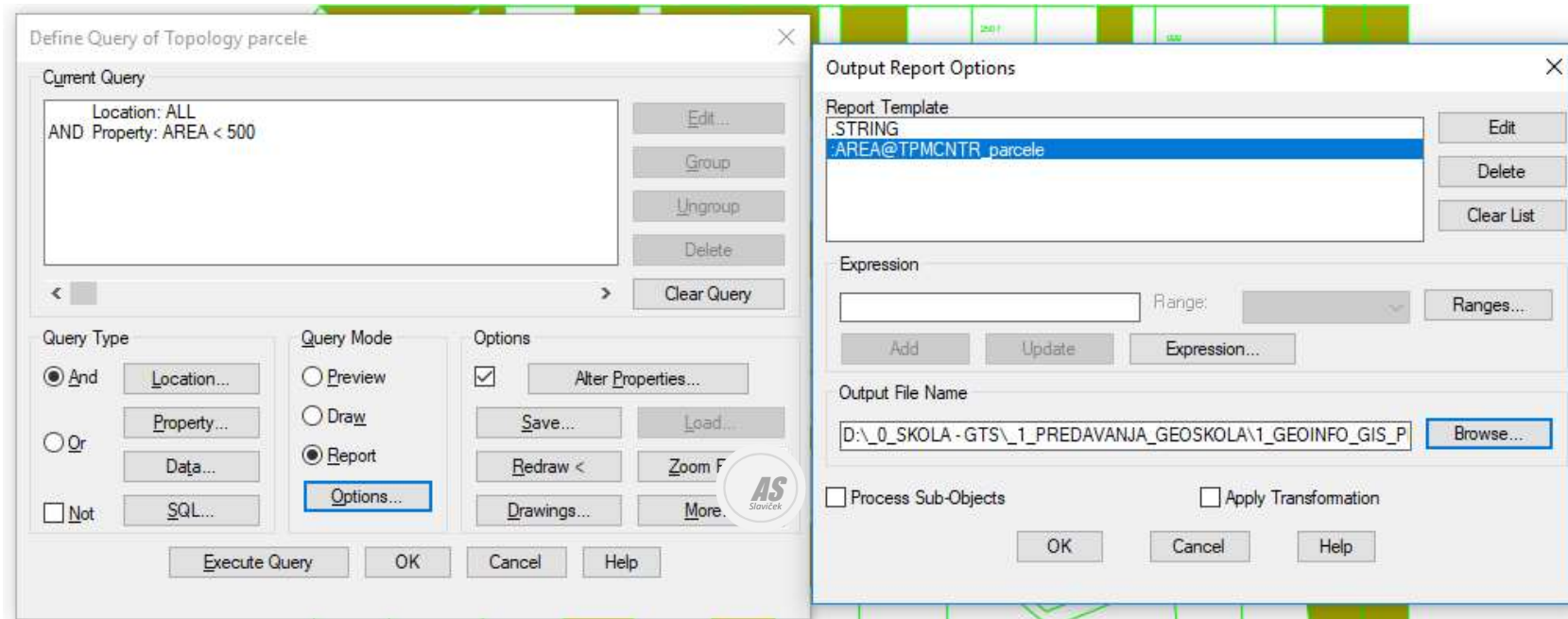
- Map Drafting Menu:** Shows the 'Query' menu with 'Define Topology Query...' selected.
- Define Query of Topology Dialog:** Shows the current query: 'Location: ALL AND Property: AREA < 500'. The 'Alter Properties...' button is highlighted with a red box.
- Set Property Alterations Dialog:** Shows the 'Hatch' property set to 'SOLID'. The 'Hatch...' button is highlighted with a blue box.
- Hatch Options Dialog:** Shows the 'Pattern' set to 'SOLID', 'Scale' to '1.0', 'Rotation' to '0.0', 'Layer' set to 'ANALIZA_1', and 'Color' set to 'BYLAYER'. The 'Layers...' button is highlighted with a blue box.
- Layer Properties Manager:** Shows the current layer '1_kc_medja' and a list of layers with their colors.

S...	Name	O...	Fre...	L...	Color
0	0				white
1_kc_broj	1_kc_broj				green
1_kc_medja	1_kc_medja				green
ANALIZA_1	ANALIZA_1				white
ANALIZA_2	ANALIZA_2				white
Defpoints	Defpoints				white

Query Mode - Preview

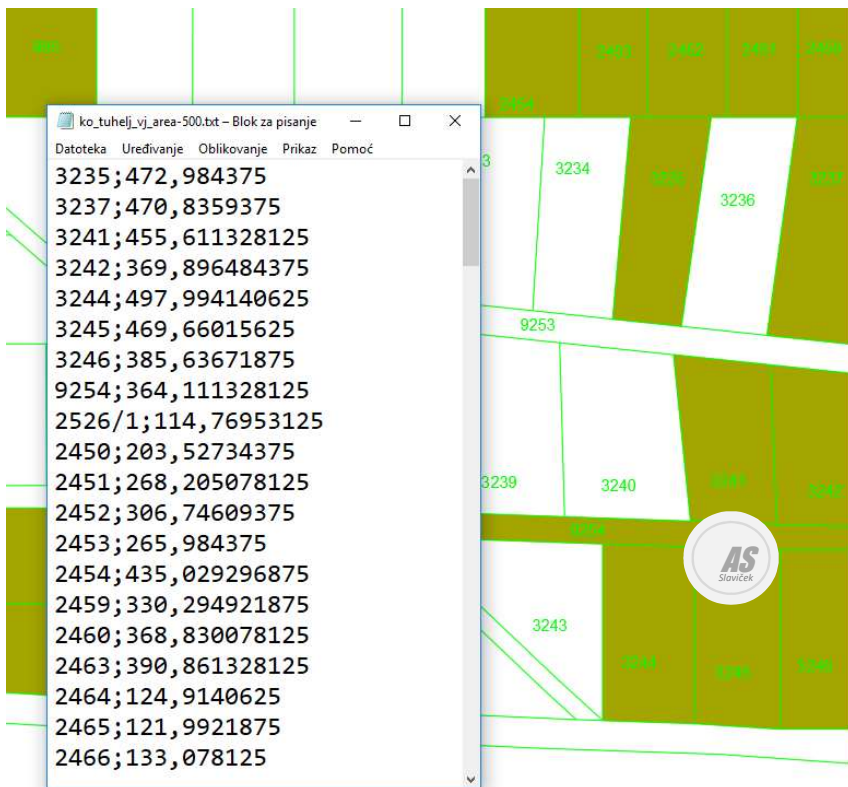


Query Mode - Report



Command: _maptopoquery
Executing query...
Executing property query...done.
Executing location query...done.
134 object(s) have been queried.

Query Mode - Report



MS Excel



	A	B
1	Broj parcele	Površina m2
2	3235	473
3	3237	471
4	3241	456
5	3242	370
6	3244	498
7	3245	470
8	3246	386
9	9254	364
10	2526/1	115
11	2450	204
12	2451	268
13	2452	307
14	2453	266
15	2454	435
16	2459	330
17	2460	369
18	2463	391
19	2464	125
20	2465	122

	A	B
124	2589	393
125	2590	332
126	2591	336
127	2592	347
128	2593	370
129	2594	246
130	996	356
131	995	359
132	998	348
133	993	63
134	992	243
135	991	197
136	UKUPNO	41540
137		

