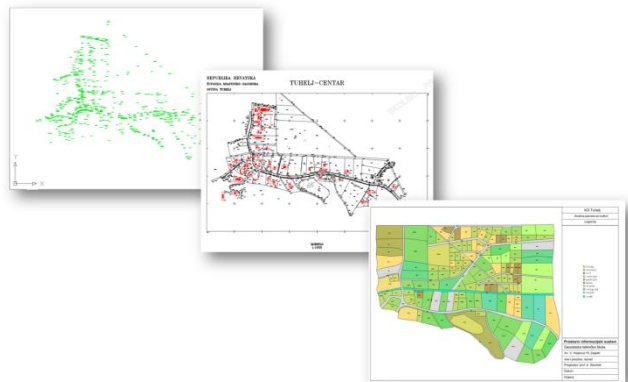


KO Tuhelj

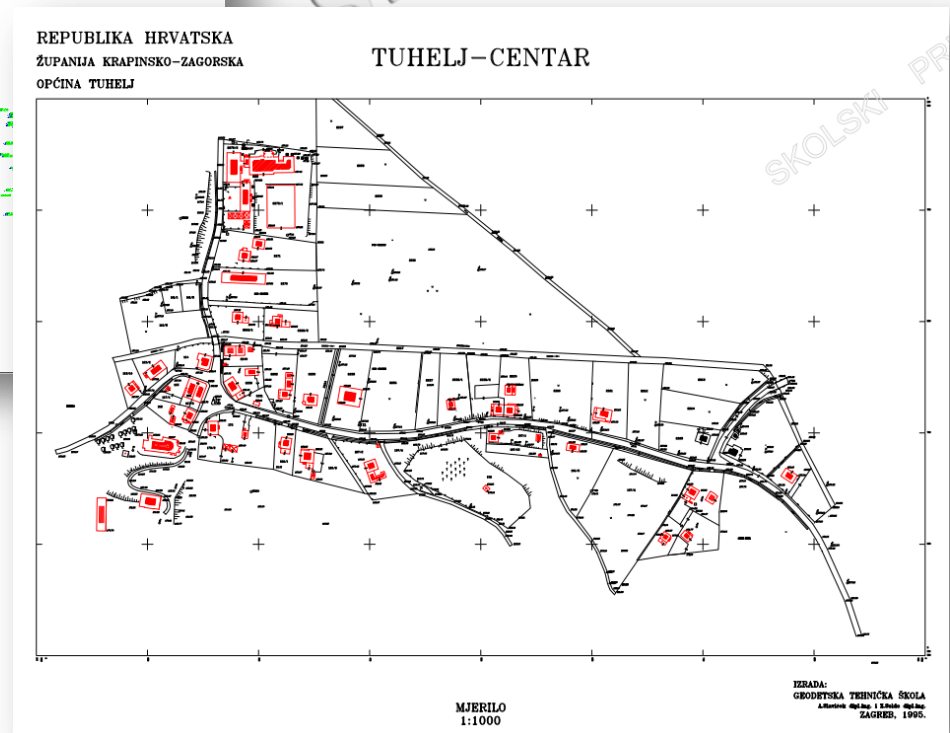
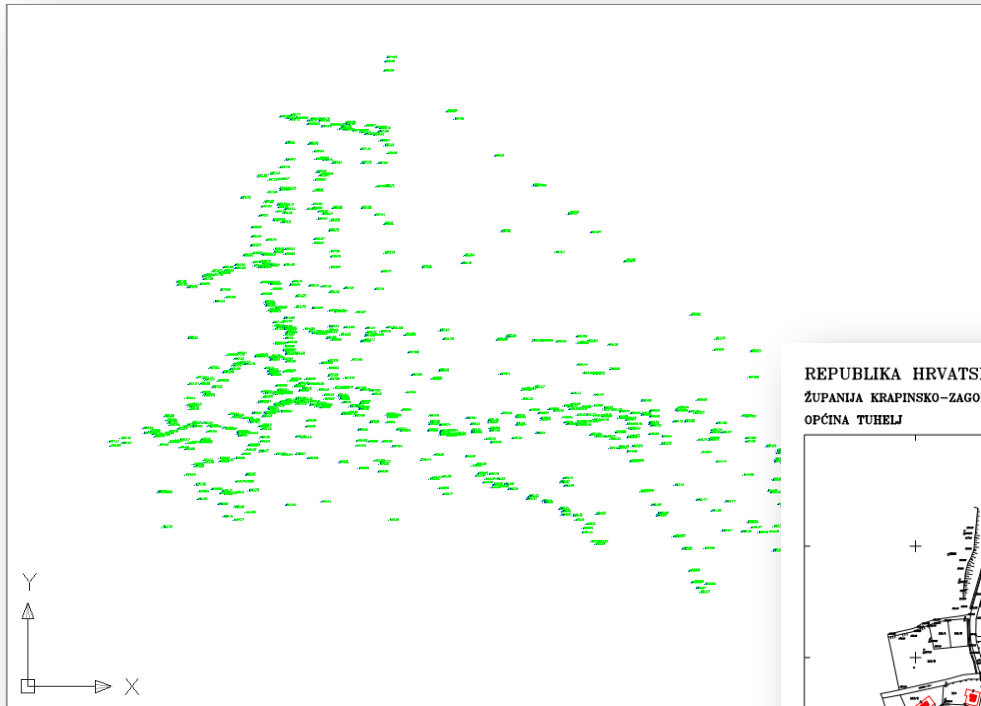


Izrada digitalnog katastarskog plana
Čišćenje plana
Topologija
Povezivanje s bazom
Analiza

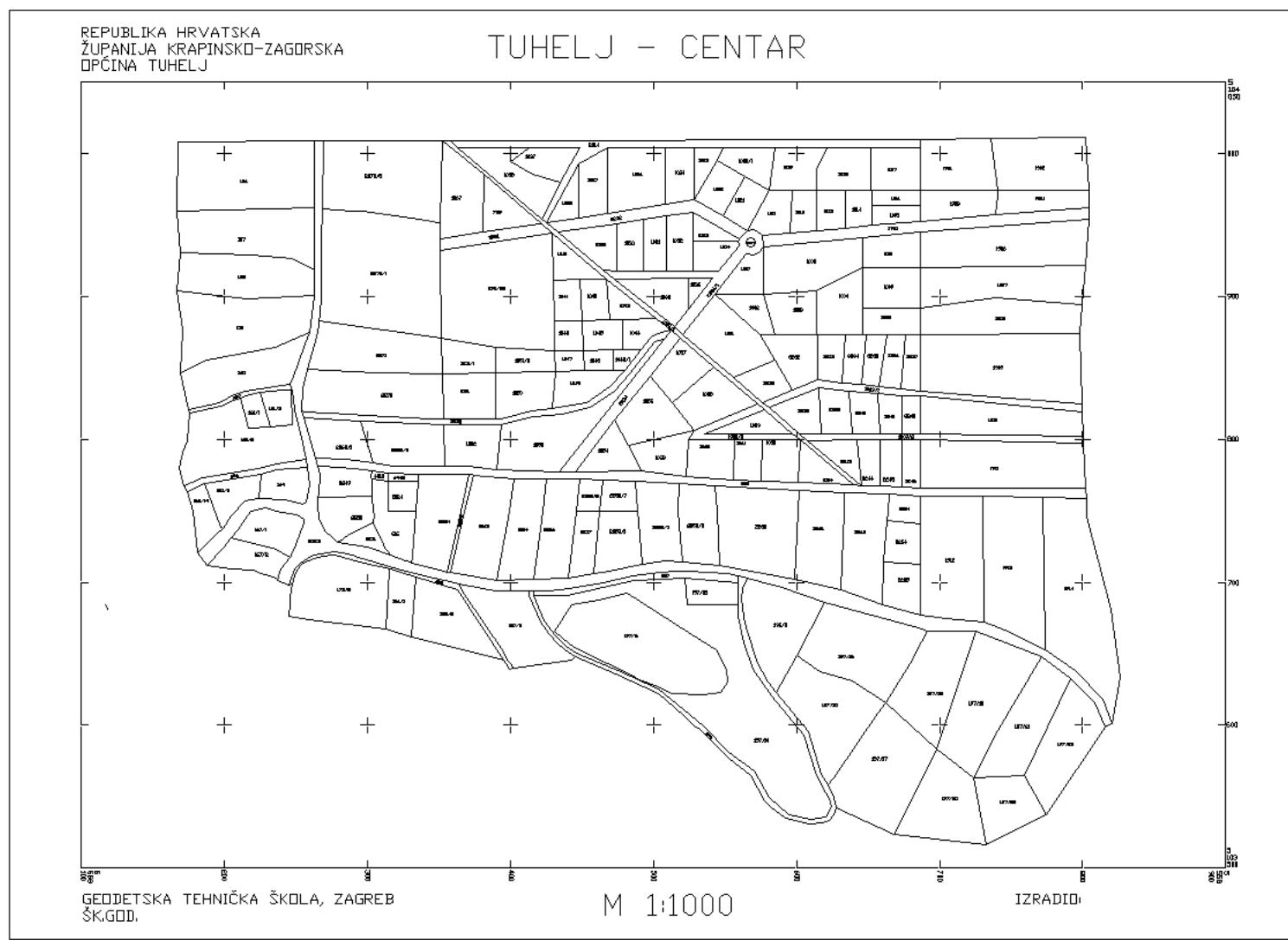
Armando Slaviček

Geodetskakatehničkaskola, 7

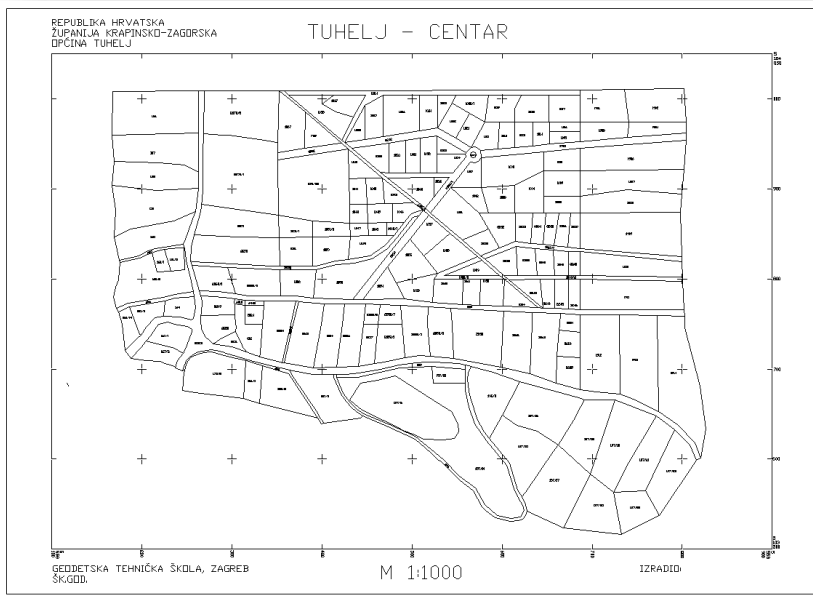
1. Izrada digitalnog katastarskog plana



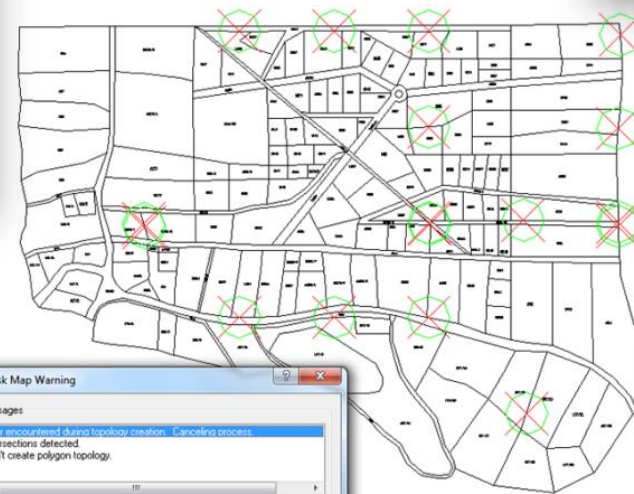
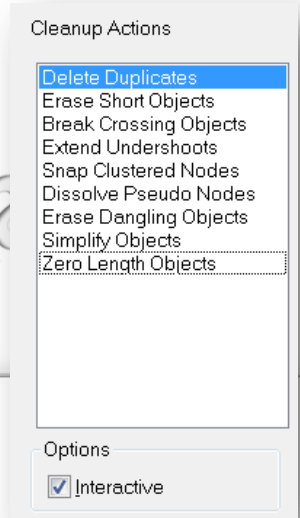
1. Izrada digitalnog katastarskog plana



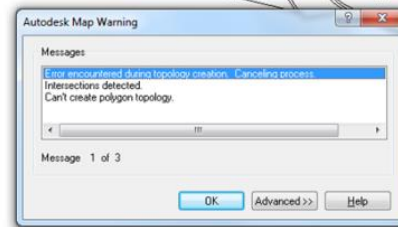
2. Čišćenje plana



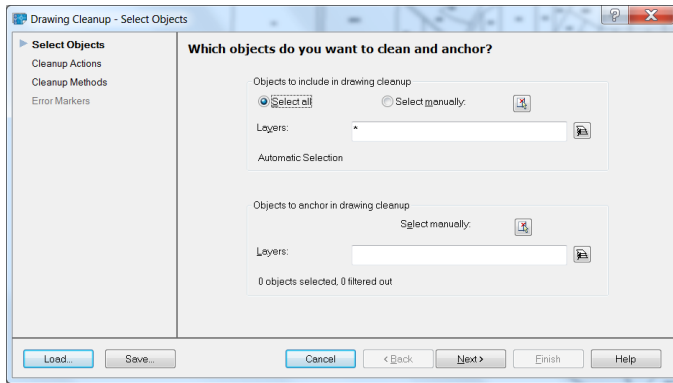
Map – Tools – Drawing Cleanup



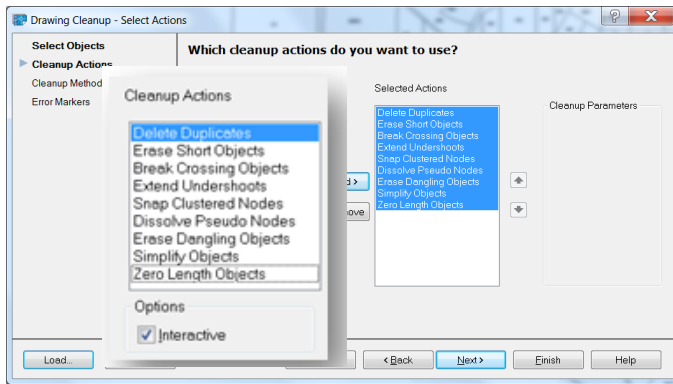
Drawing Cleanup je alat u Autodesk Map programu koji korisnicima služi za uklanjanje ili ispravljanje pogrešaka koje su se dogodile pri radu.



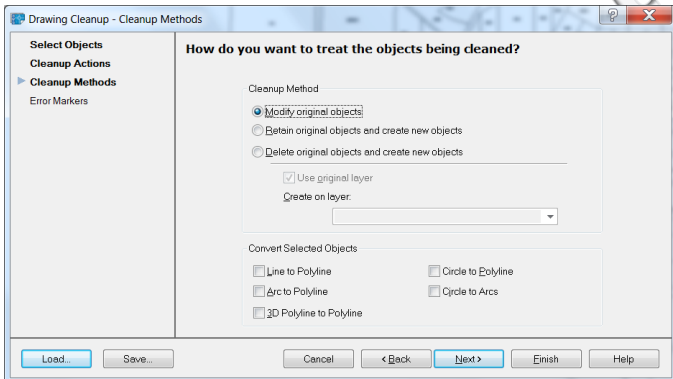
1.



2.



3.



Čišćenje plana

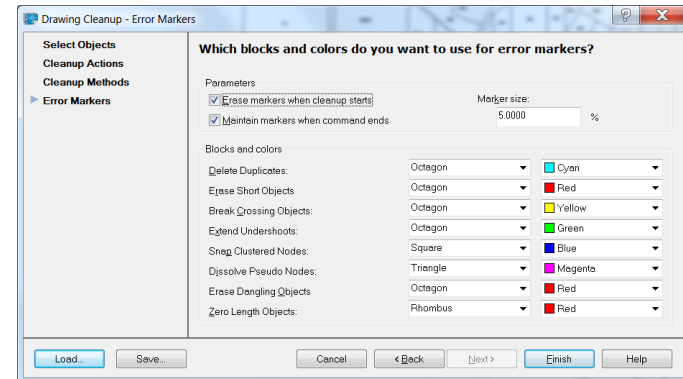
Sa trake izbornika izaberite **Map > Alati > Draving Cleanup**.

1. Odaberite koje objekte želite očistiti ili ispraviti.
2. Odaberite vrstu čišćenja i odaberite opcije i toleranciju za pojedinu naredbu.
3. Odaberite kako točno želite ispraviti pogreške. Možete postaviti da program Autodesk Map automatski popravlja pogreške, ili vidjeti listu pogrešaka, ispitati pojedinu pogrešku na planu i odlučiti hoćete li je ispraviti, ukloniti s liste ili označiti je tako da je možete kasnije popraviti ili ukloniti.

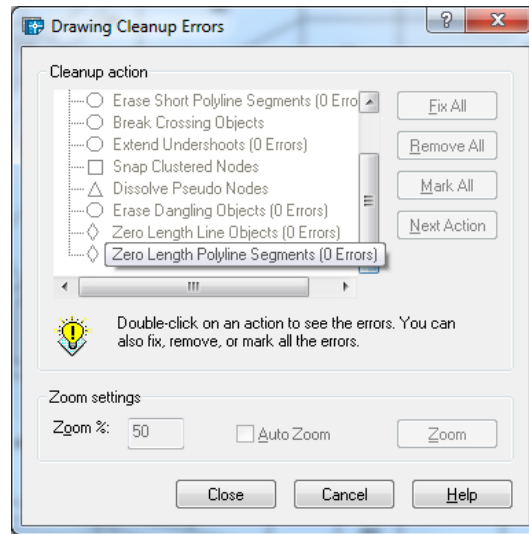
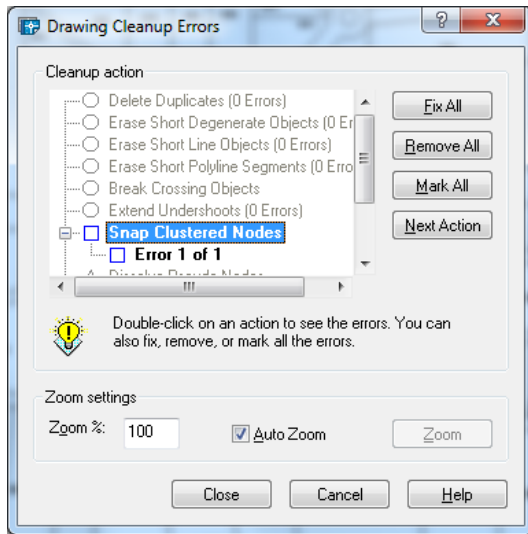
Naznačite kako postupiti prema originalnim objektima nakon što je čišćenje dovršeno. Možete promijeniti originalne objekte, zadržati ih i dodati nove objekte ili ukloniti originalne objekte i dodati nove.

4. Postavite oznake pogrešaka. Možete odrediti veličinu, oblik i boju oznake kako će se označavati pogreška za svaku opciju čišćenja. Ako ste izabrali da program automatski ispravlja pogreške, pogreške će se ispraviti odmah prema postavkama koje ste odredili. Ako izaberete pregled pogrešaka prije bilo kakvih popravaka, pogreške čišćenja će se prikazati u prozoru gdje možete imati pregled pogrešaka i odlučiti kako ih ispraviti.

4.



Čišćenje plana

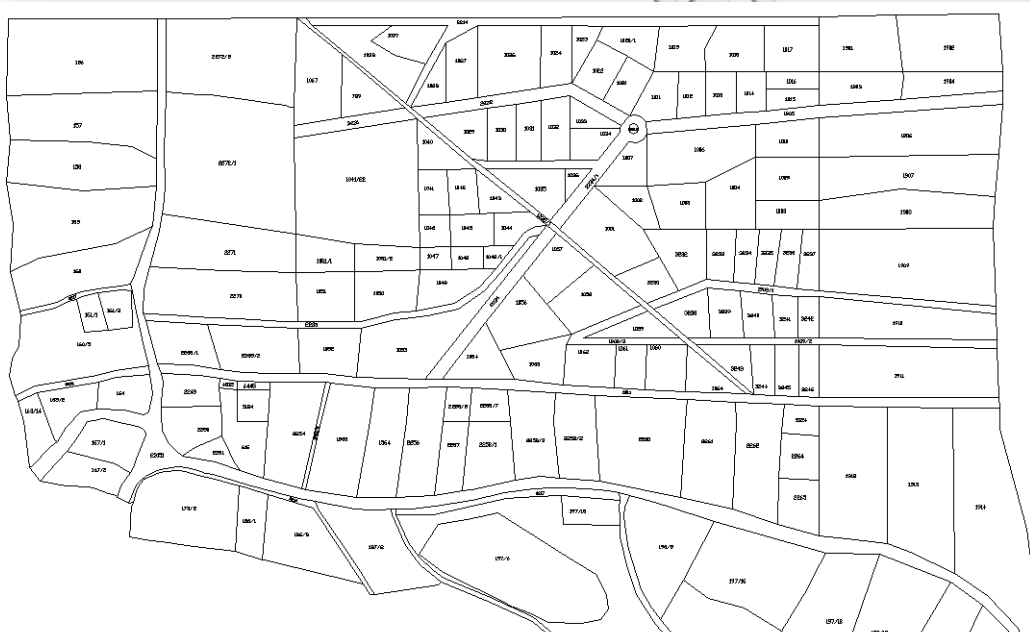


Rezultat čišćenja

Command: _MAPCLEAN

Searching for objects on layers * ...
612 object(s) found

0 duplicate(s) detected.
Correcting linear errors: 0 fixed
0 short error(s) of type: 'Degenerate Object'
Correcting linear errors: 0 fixed
0 short error(s) of type: 'Short Object'
Correcting linear errors: 0 fixed
0 short error(s) of type: 'Short Polyline Segment'
Correcting linear errors: 0 fixed
47 crossing(s) detected.
Correcting linear errors: 47 fixed
0 undershoot(s) near to segments detected.
Correcting linear errors: 0 fixed
0 undershoot(s) near a vertex.
Correcting linear errors: 0 fixed
1 cluster(s) detected.
Correcting node errors: 1 fixed
155 pseudo node(s) detected.
Correcting node errors: 0 fixed
0 dangling object(s) detected.
Correcting node errors: 0 fixed
0 zero length error(s) of type: 'Line Object'
Correcting linear errors: 0 fixed
0 zero length error(s) of type: 'Polyline Segment'
Correcting linear errors: 0 fixed
Cleanup statistics:
Modified object(s) :79
Deleted object(s) :0
Created object(s) :24

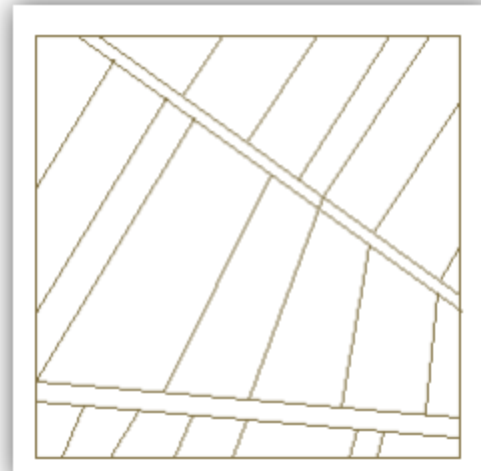
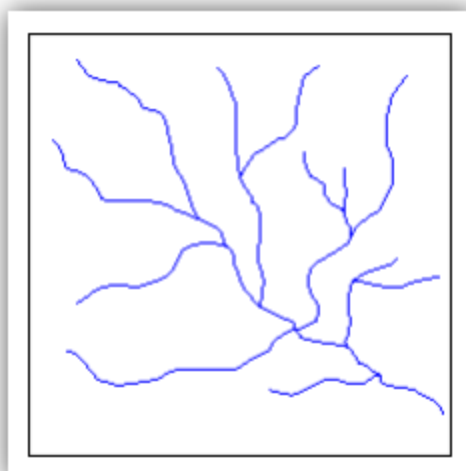
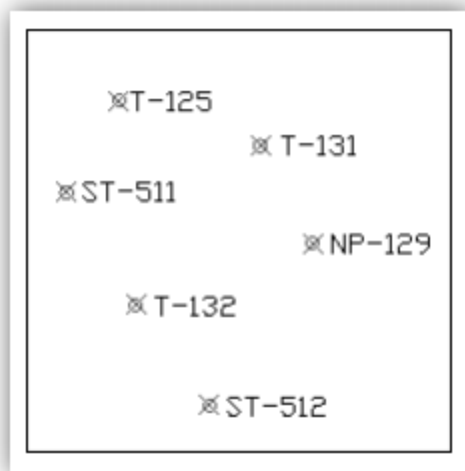


3. Kreiranje topologije

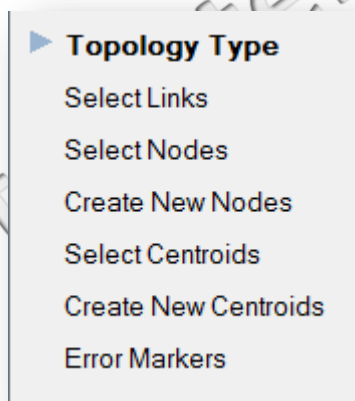
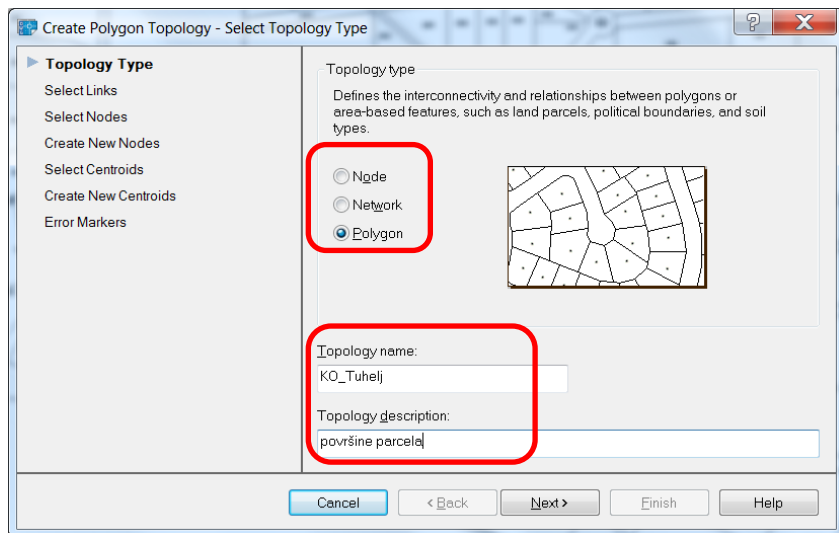
Topologija (topology) je skup objekata i objektnih podataka koji definiraju odnose među tim objektima.

AutoCAD Map podržava tri tipa topologije:

čvornu (node), **mrežnu** (network) i **poligonsku** (polygon).

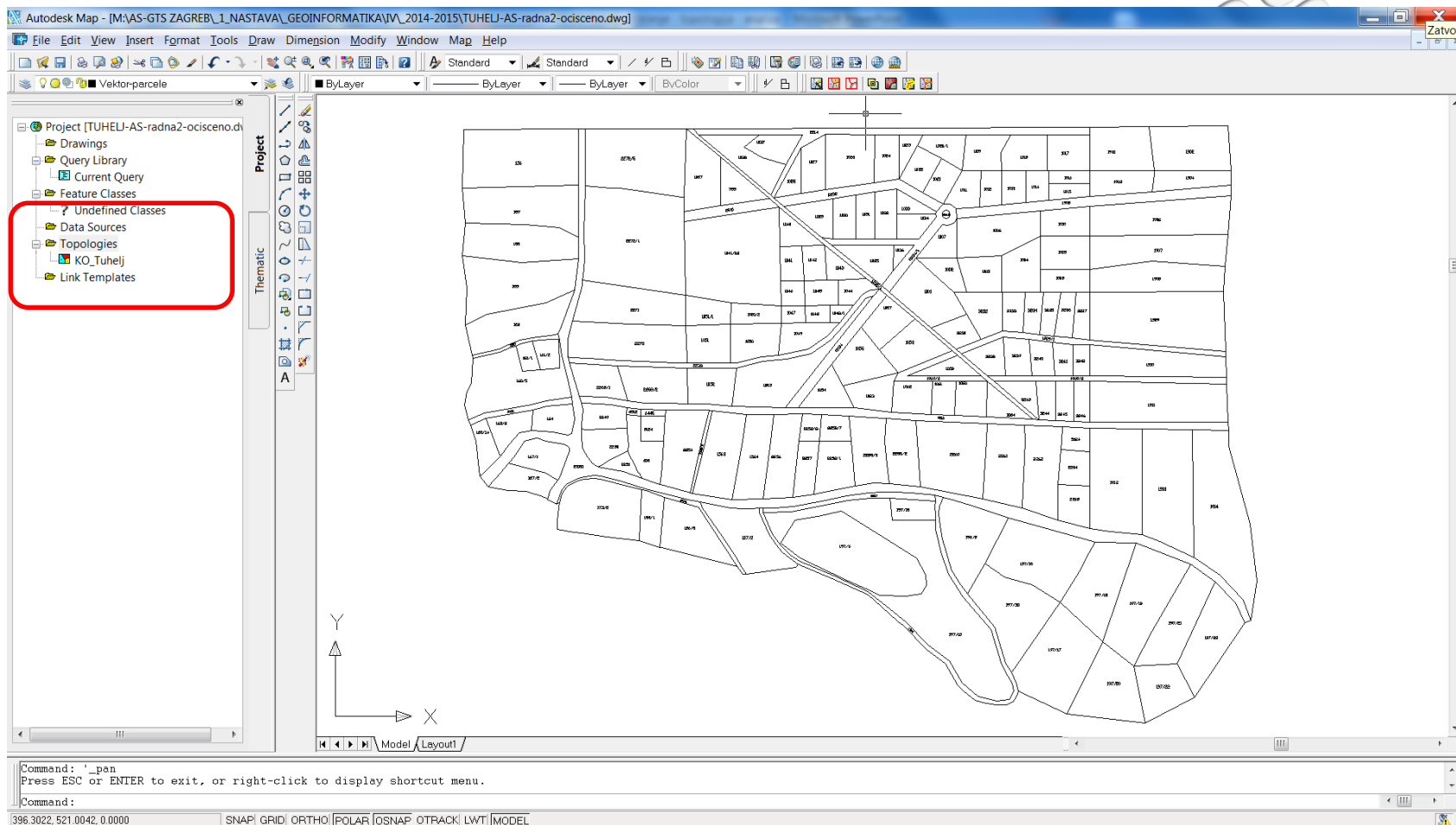


3. Kreiranje poligonske topologije - parcele



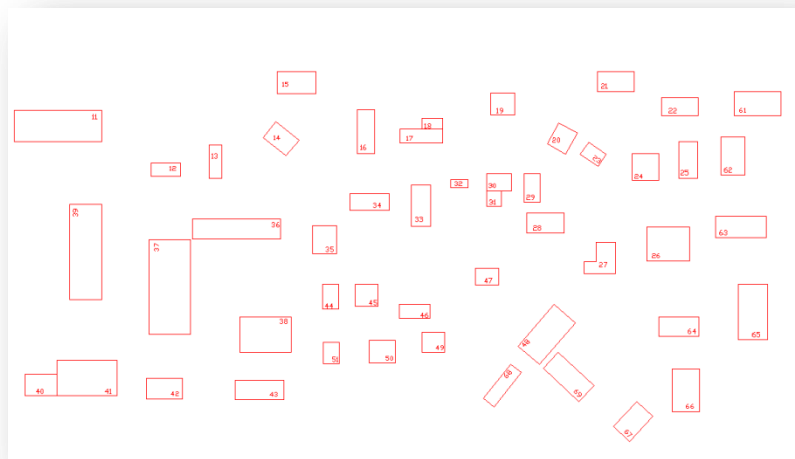
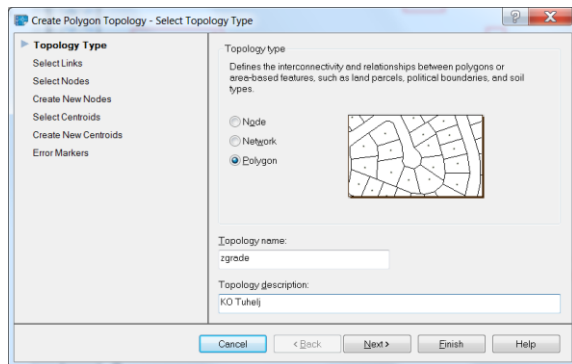
- **Odabiranje linija** - odaberite linije koje želite uključiti u topologiju. Možete uključiti sve linije ili odabrati određene linije. Za odabir linija, kliknite na Select Objects. Također, možete odrediti layer-e koje želite pretražiti za odabir linija.
- **Odabiranje čvorova** - odaberite čvorove koje želite uključiti u topologiju. Možete uključiti sve čvorove ili odabrati određene čvorove. Za odabiranje čvorova, kliknite na Select Objects. Također, možete odrediti layer-e koje želite pretražiti za odabir čvorova.
- **Kreiranje novih čvorova** - odaberite Create New Nodes za formiranje čvorova na krajevima linija gdje su povezane. Zatim, odredite gdje da se formiraju i koju točku ili blok koristiti pri formiranju.
- **Odabiranje centroida** - odaberite centroide koje želite uključiti u topologiju. Možete uključiti sve centroide ili odabrati određene. Također, možete odrediti layer-e koje želite pretražiti za odabir centroida.
- **Kreiranje novih centroida** - odaberite Create Missing Centroids da stvorite centroide za područja gdje nedostaju. Zatim, odredite gdje da se formiraju i koju točku ili blok koristiti pri formiranju.
- **Označavanje pogrešaka** - kliknite na Highlight errors za označavanje pogrešaka. Odredite oznaku i boju za pojedinu pogrešku te zajedničku veličinu bloka.

3. Kreiranje poligonske topologije



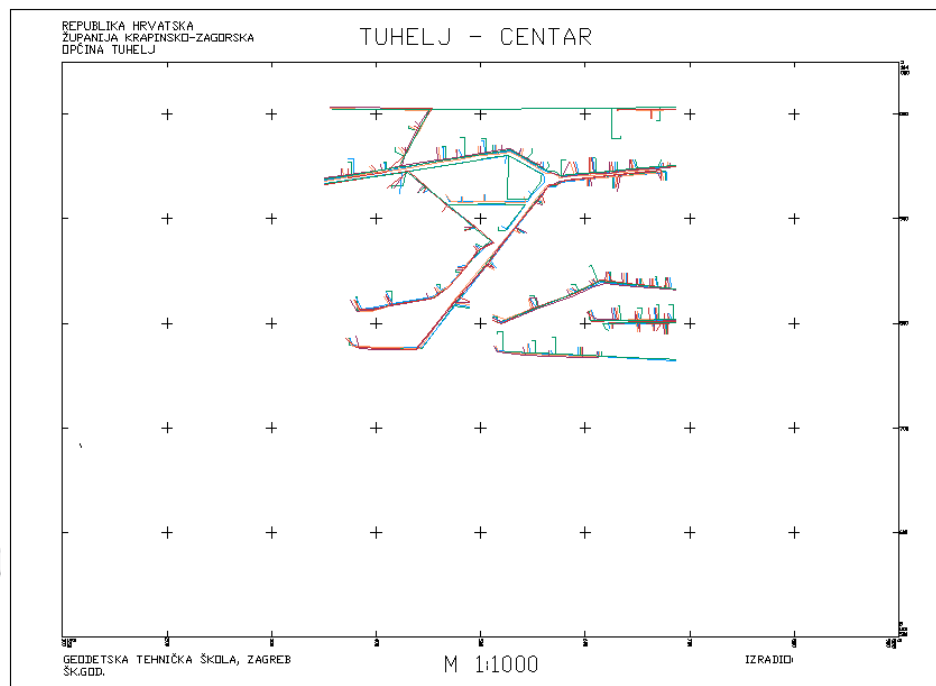
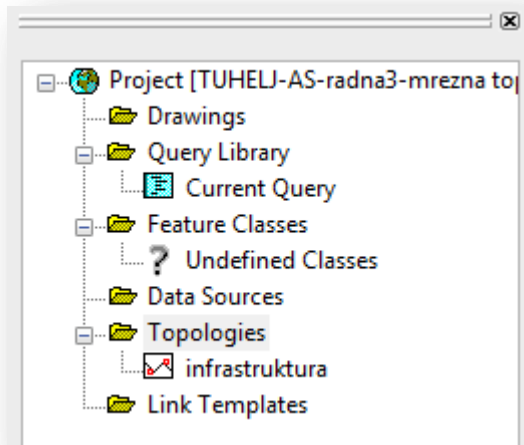
Command: _MAPTOPOCREATE
Creating Polygon topology: KO_Tuhelj...
Writing topology information to the drawing...
Topology successfully created with 174 polygons, 482 links, and 311 nodes.

Kreiranje poligonske topologije - zgrade



Geodeti

Kreiranje mrežne topologije



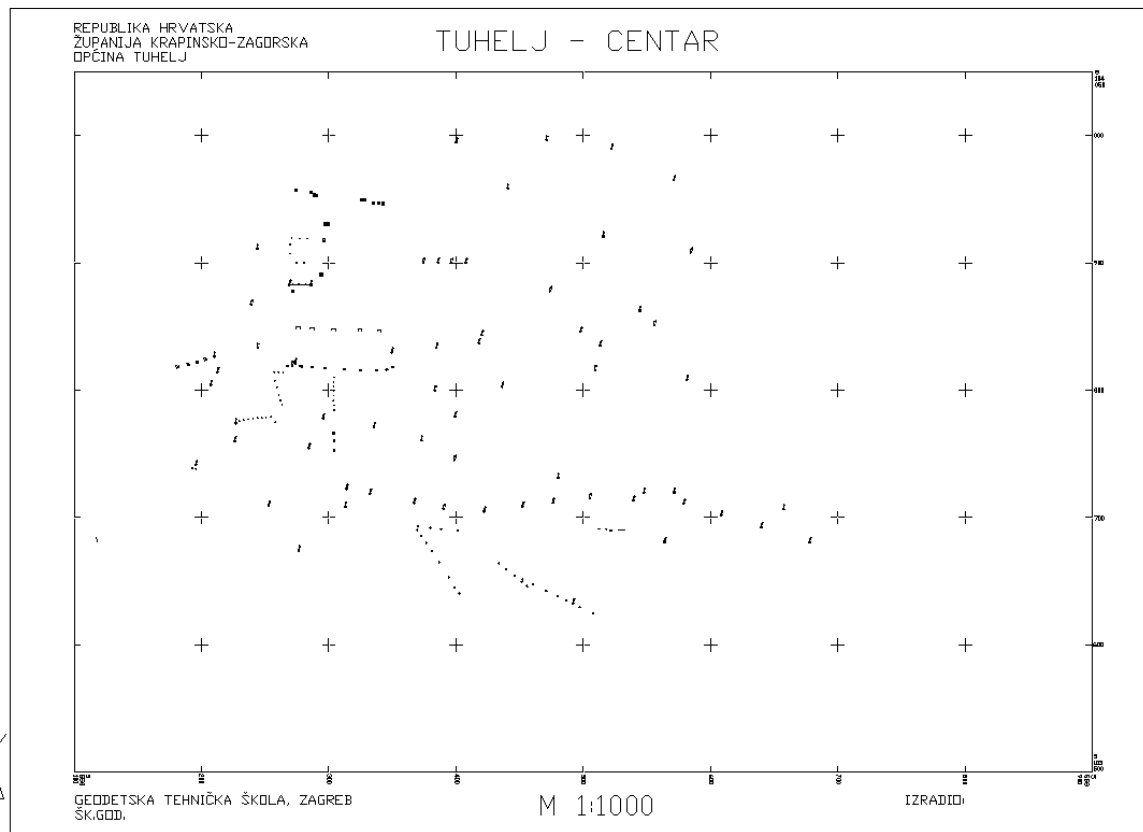
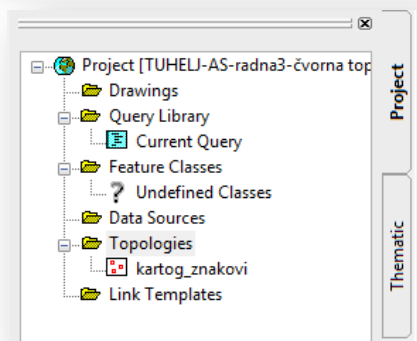
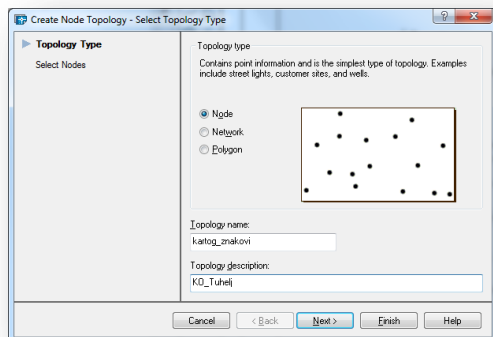
Command: _MAPTOPOCREATE

Creating Network topology: infrastruktura...

Writing topology information to the drawing...

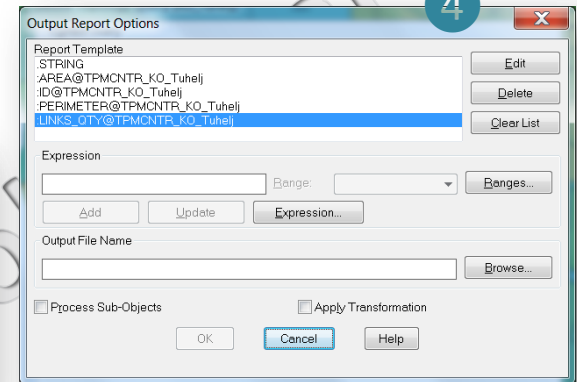
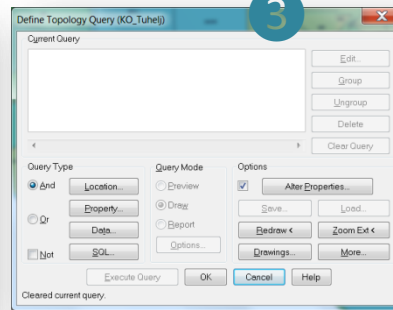
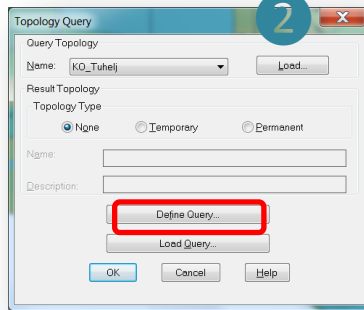
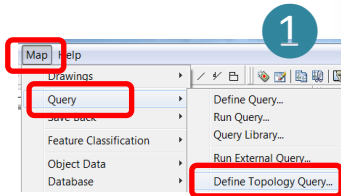
Topology successfully created with 935 links and 1217 nodes.

Kreiranje čvorne topologije



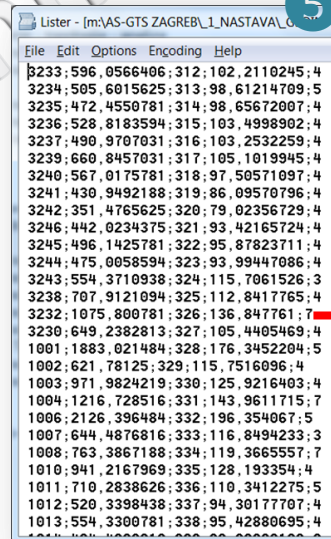
4. Analiza površina parcela -> txt -> xlsx

Map – Query – Define Topology Query...

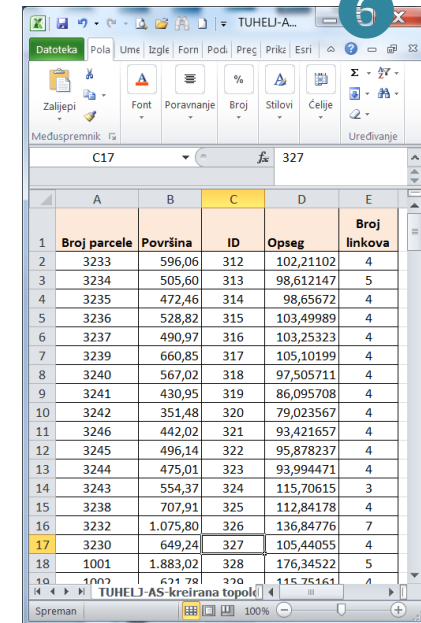


Querying from KO_Tuhelj ...
 Executing location query...done.
 Writing queried objects to report...
 Queried 174 object(s).
 Automatic save to C:\Users\Armando\AppData\Local\Temp\TUHELJ-AS-kreirana_topologija1_1_1_5724.sv\$...

Query Type – Location – All
 Query Mode – Report – Options...
 Expression – Properties – String
 ...
 Output Report Options
 String, Area, ID, Links
 Output File Name
 Execute Query



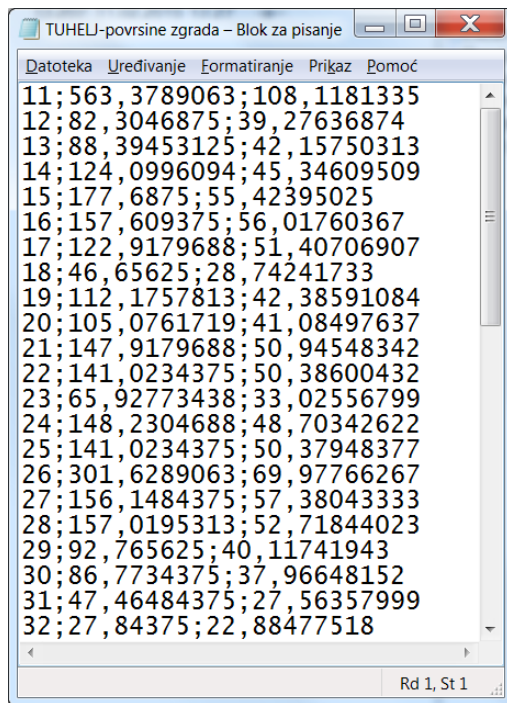
.txt



.xlsx

Analiza površina zgrada -> txt -> xlsx

Map – Query – Define Topology Query...



TUHELJ-povrs...

Datoteka Pol Um Izgl For

Zaljepi Font Poravnanje Broj Stilovi

Meduspr...

E12

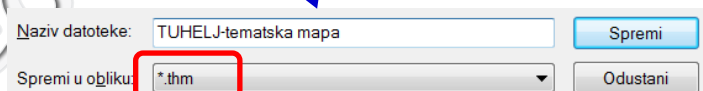
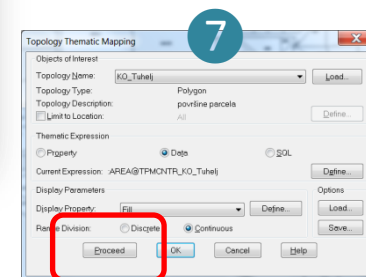
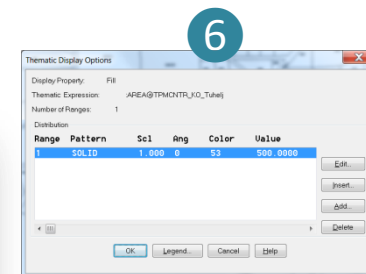
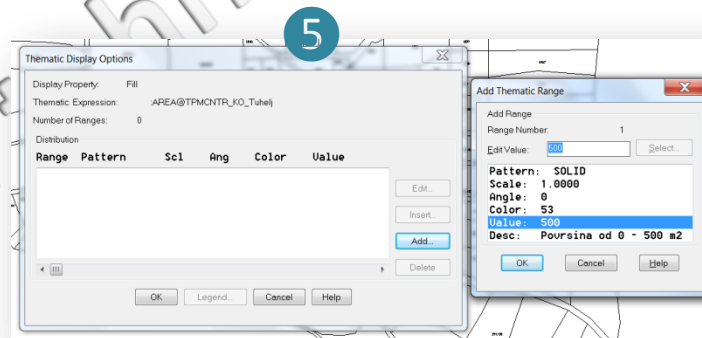
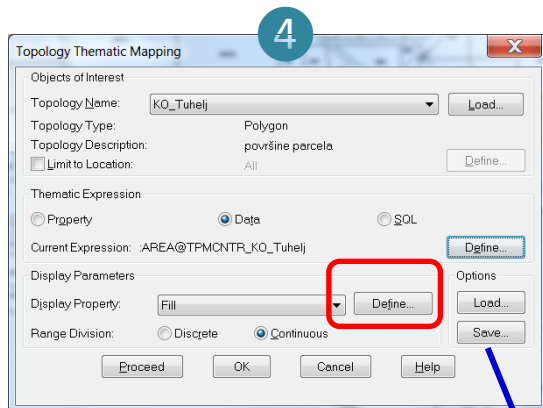
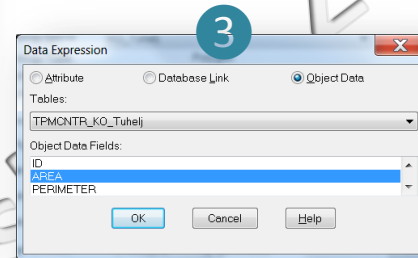
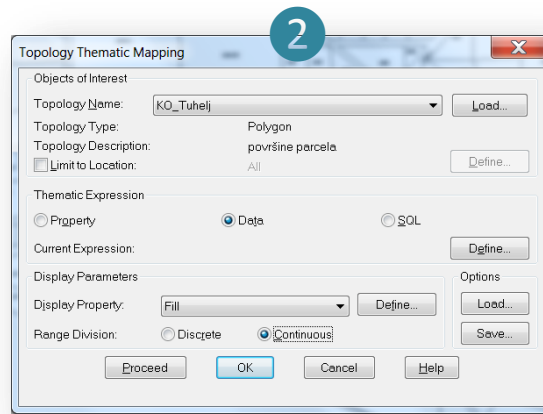
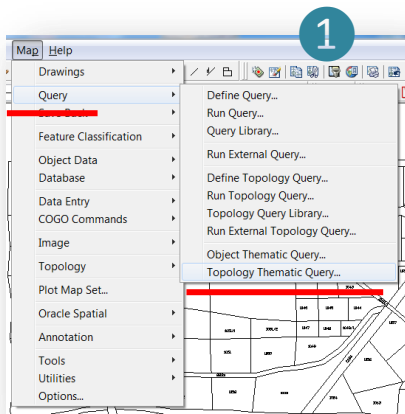
	A	B	C
1	kućni broj	Površina	Opseg
2	11	563	108,12
3	12	82	39,28
4	13	88	42,16
5	14	124	45,35
6	15	178	55,42
7	16	158	56,02
8	17	123	51,41
9	18	47	28,74
10	19	112	42,39
11	20	105	41,08
12	21	148	50,95
13	22	141	50,39
14	23	66	33,03
15	24	148	48,70
16	25	141	50,38
17	26	302	69,98
18	27	156	57,38
19	28	157	52,72
20	29	93	40,12

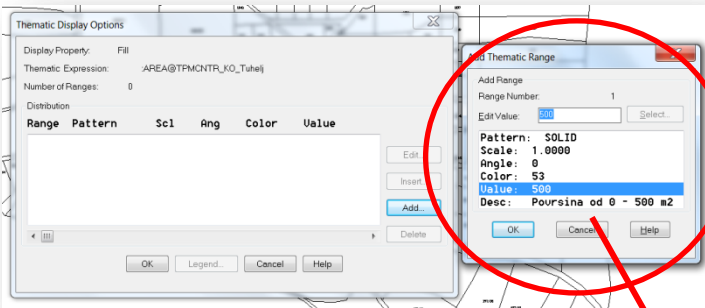
TUHELJ-povrs

100%

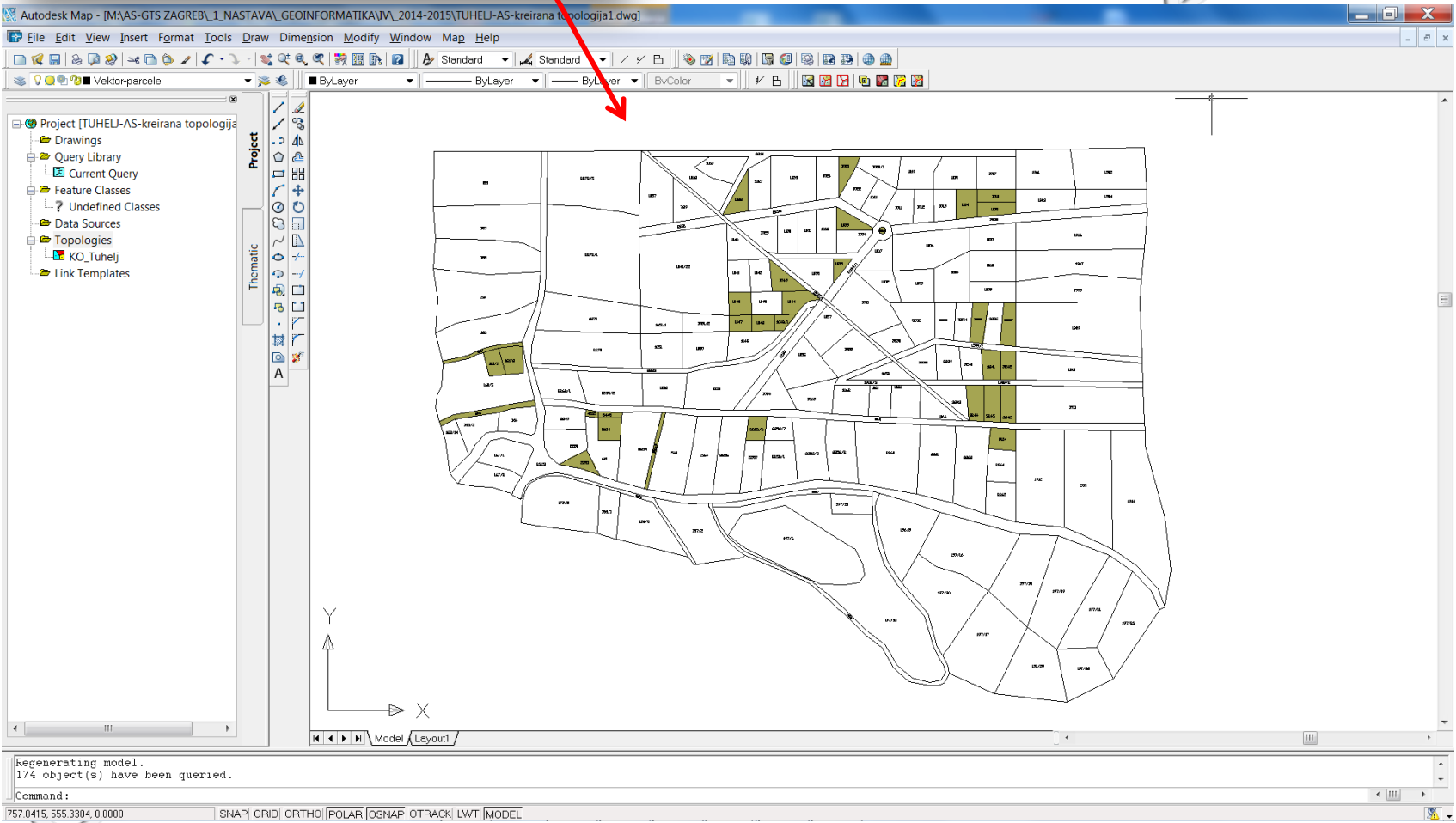
5. Analiza površina parcela – tematska mapa

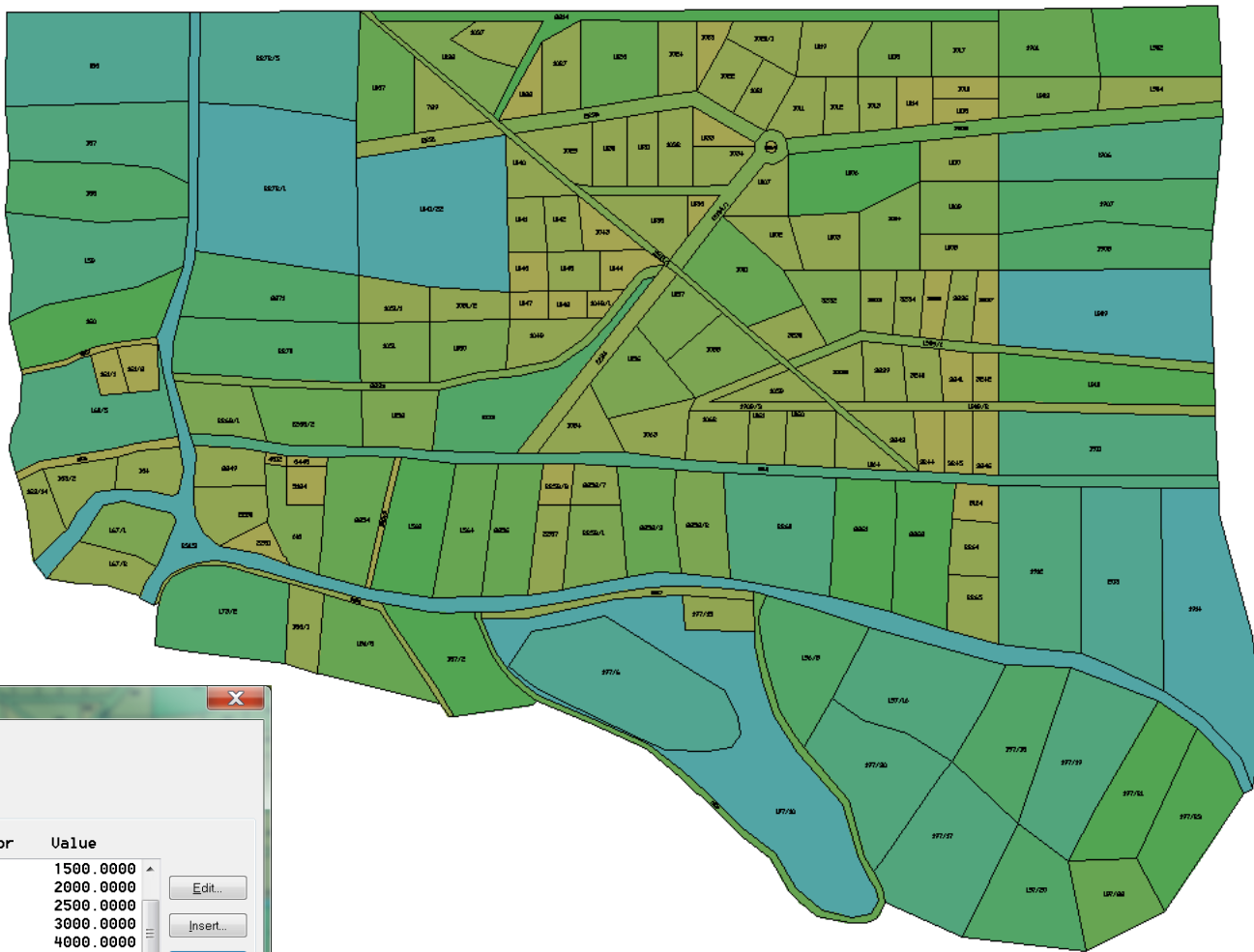
Map -> Query -> Topology Thematic Query





Zagreb





Thematic Display Options

Display Property: Fill

Thematic Expression: AREA@TPMCNTR_KO_Tuhelj

Number of Ranges: 9

Distribution

Range	Pattern	Sc1	Ang	Color	Value
3	SOLID	1.000	0	73	1500.0000
4	SOLID	1.000	0	83	2000.0000
5	SOLID	1.000	0	93	2500.0000
6	SOLID	1.000	0	103	3000.0000
7	SOLID	1.000	0	113	4000.0000
8	SOLID	1.000	0	123	5000.0000
9	SOLID	1.000	0	133	10000.0000

Buttons: Edit..., Insert..., Add..., Delete

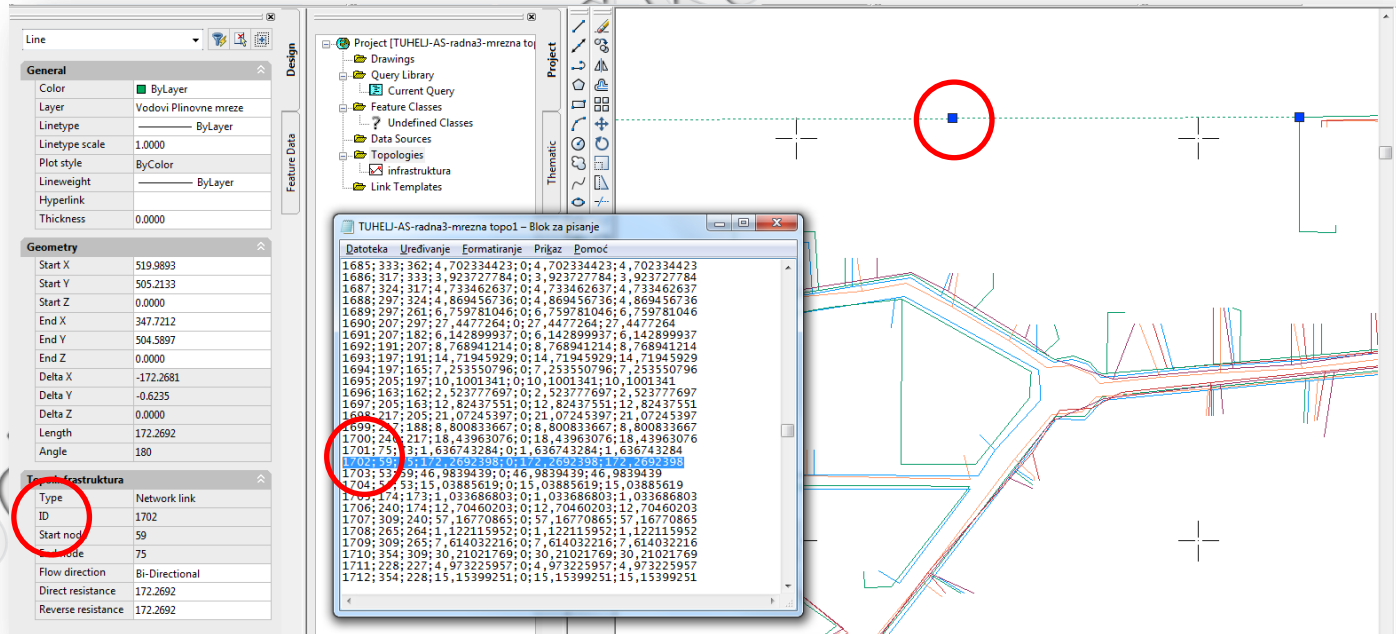
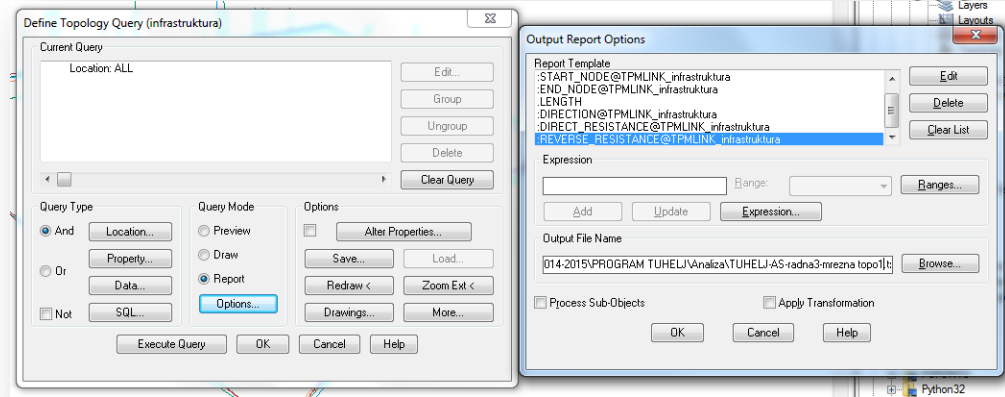
Buttons: OK, Legend..., Cancel, Help

Analiza mrežne topologije

Map -> Query -> Define Topology Query...

Define Query...

Define Topology Query

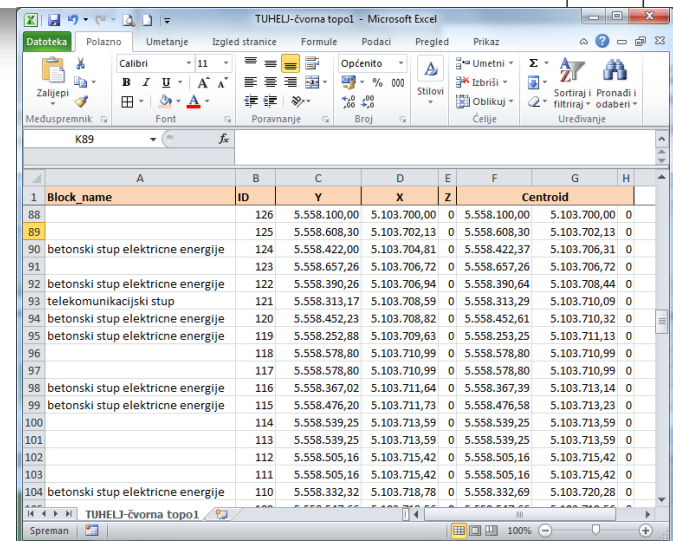
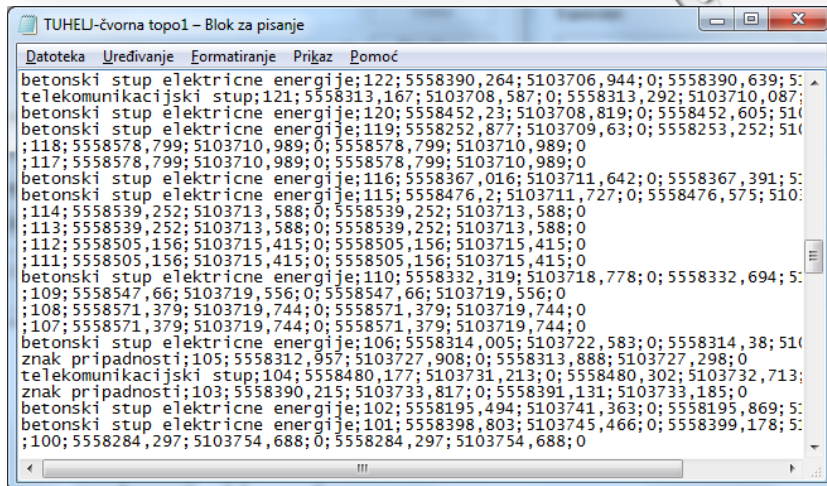
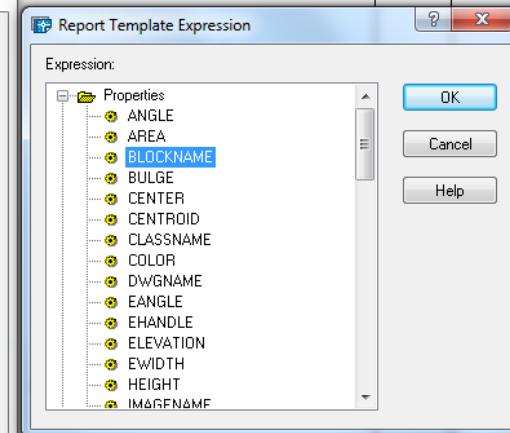
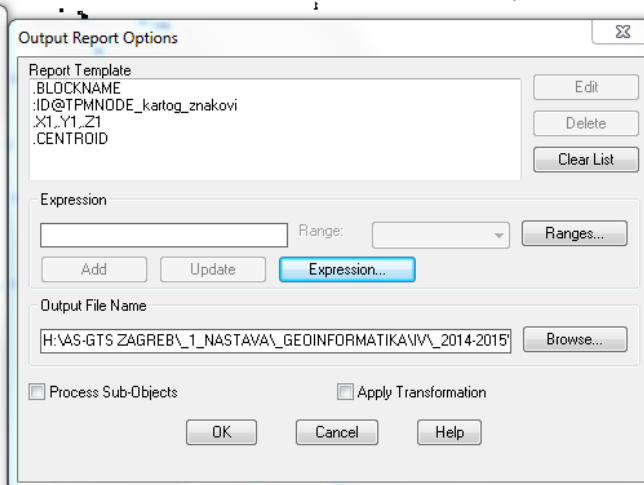
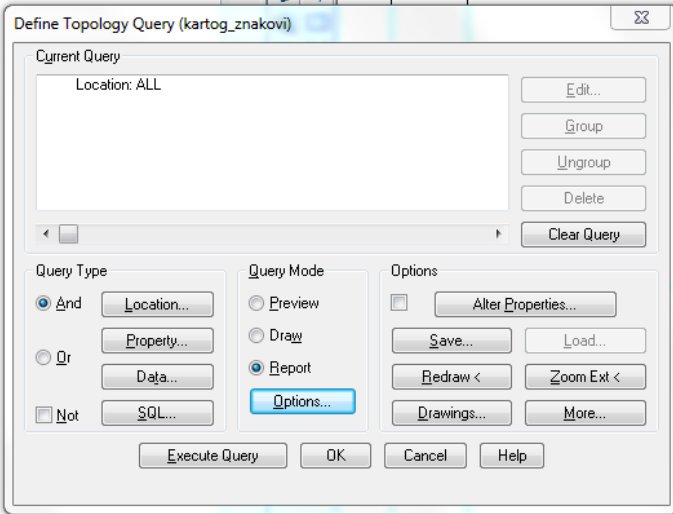


Analiza čvorne topologije

Map -> Query -> Define Topology Query...

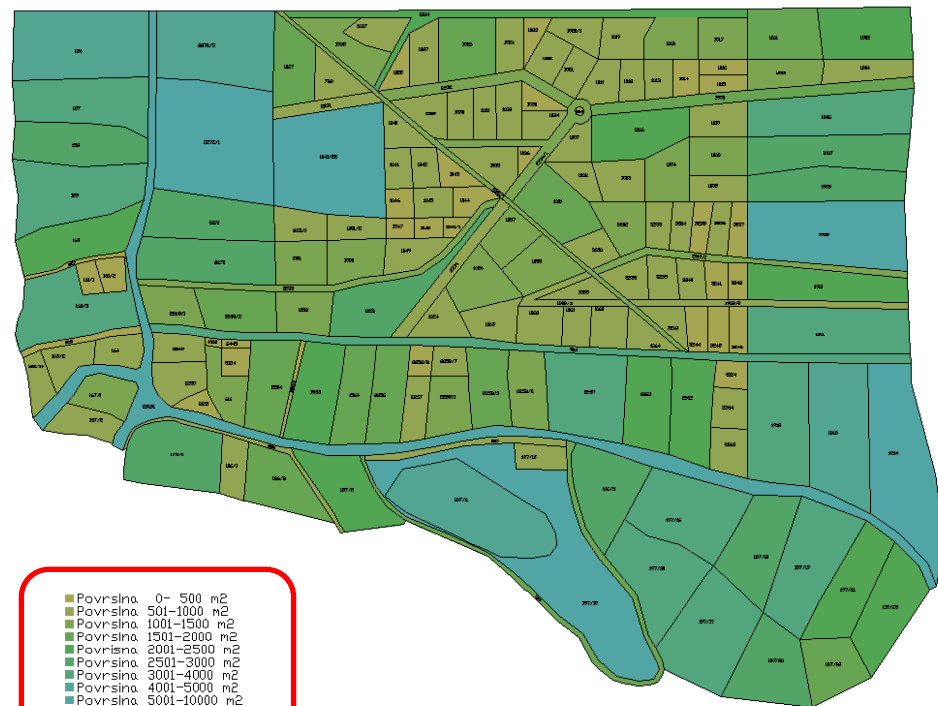
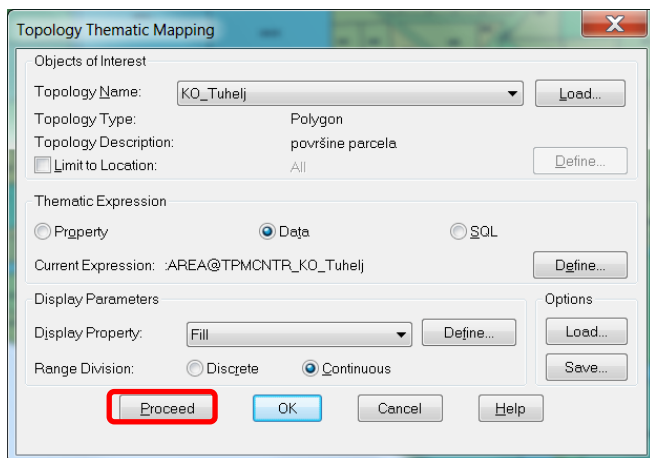
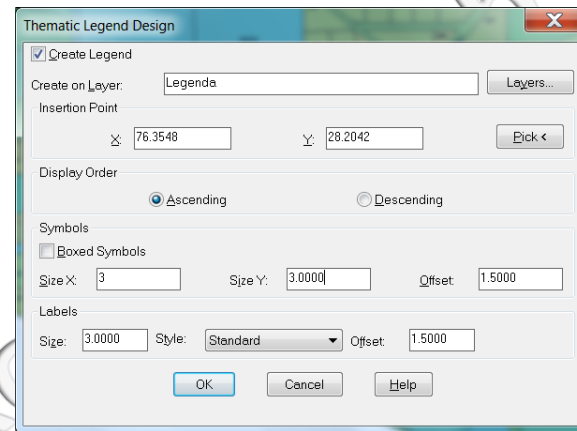
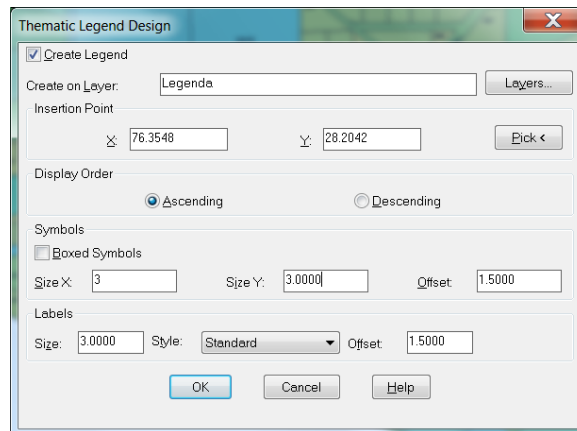
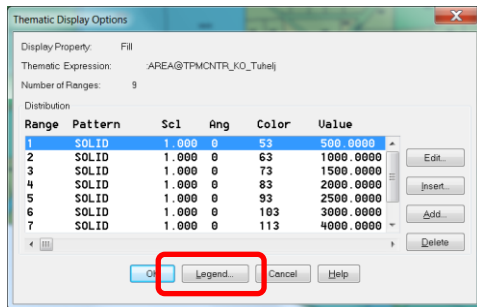
Define Query...

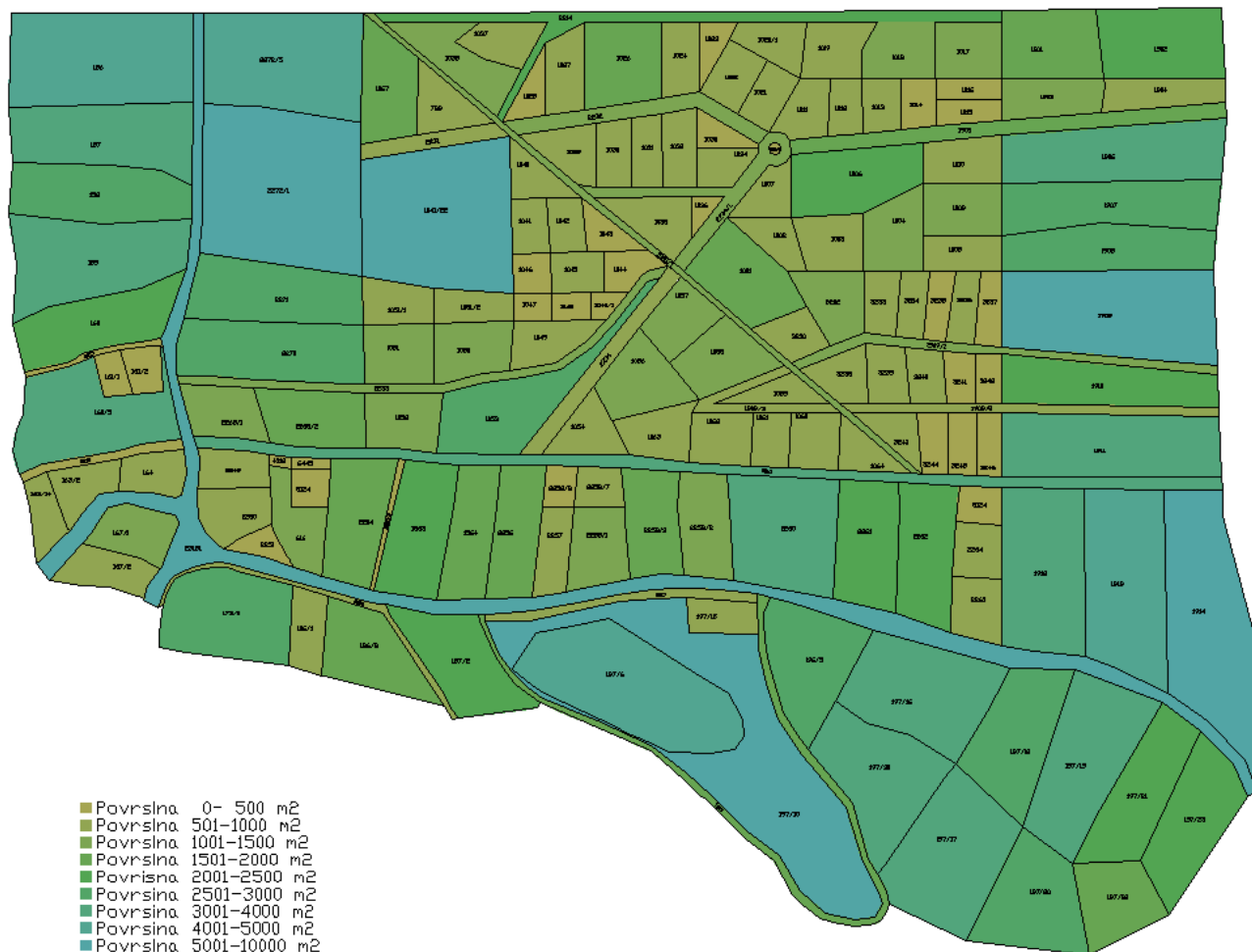
Define Topology Query



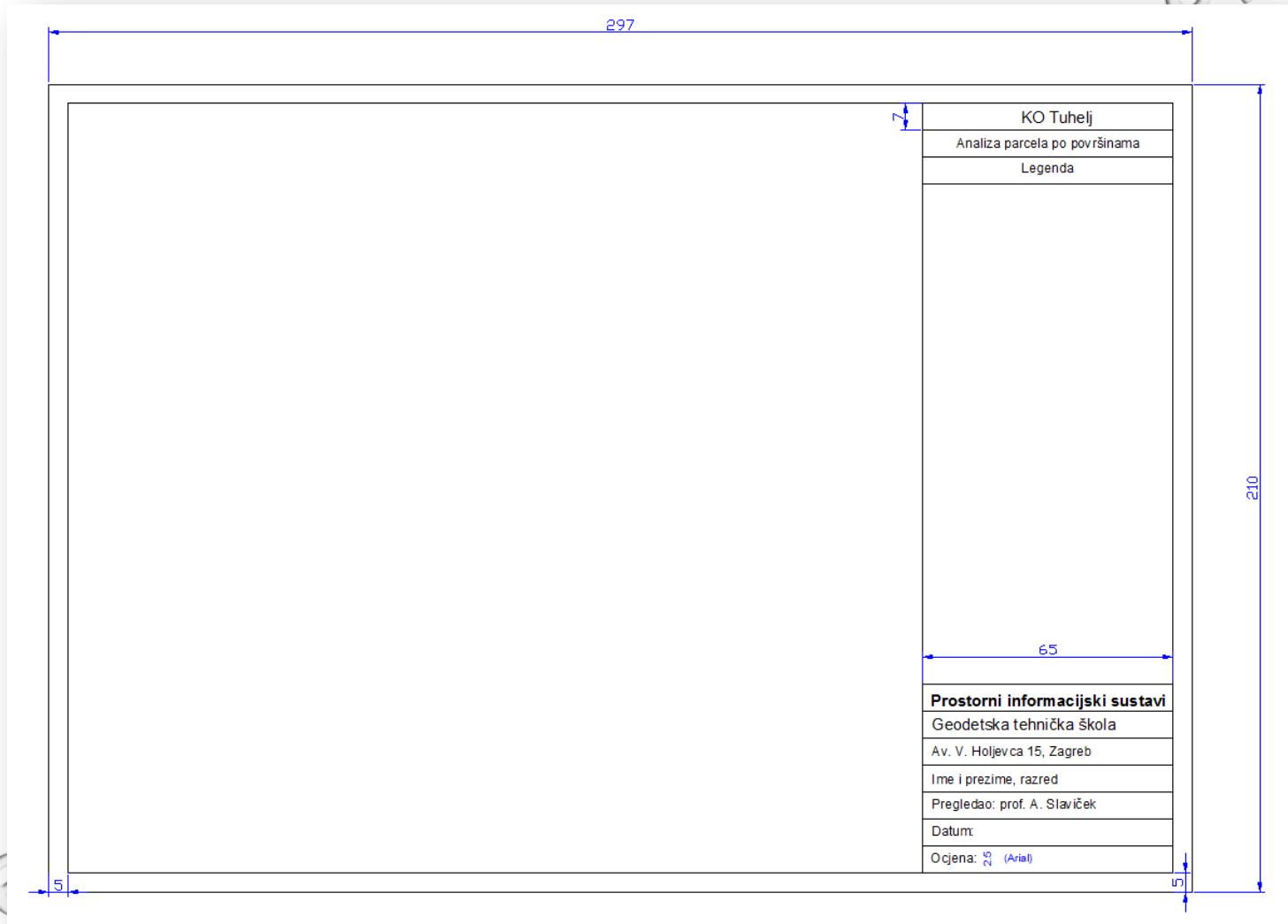
Armando Slaviček

6. Legenda

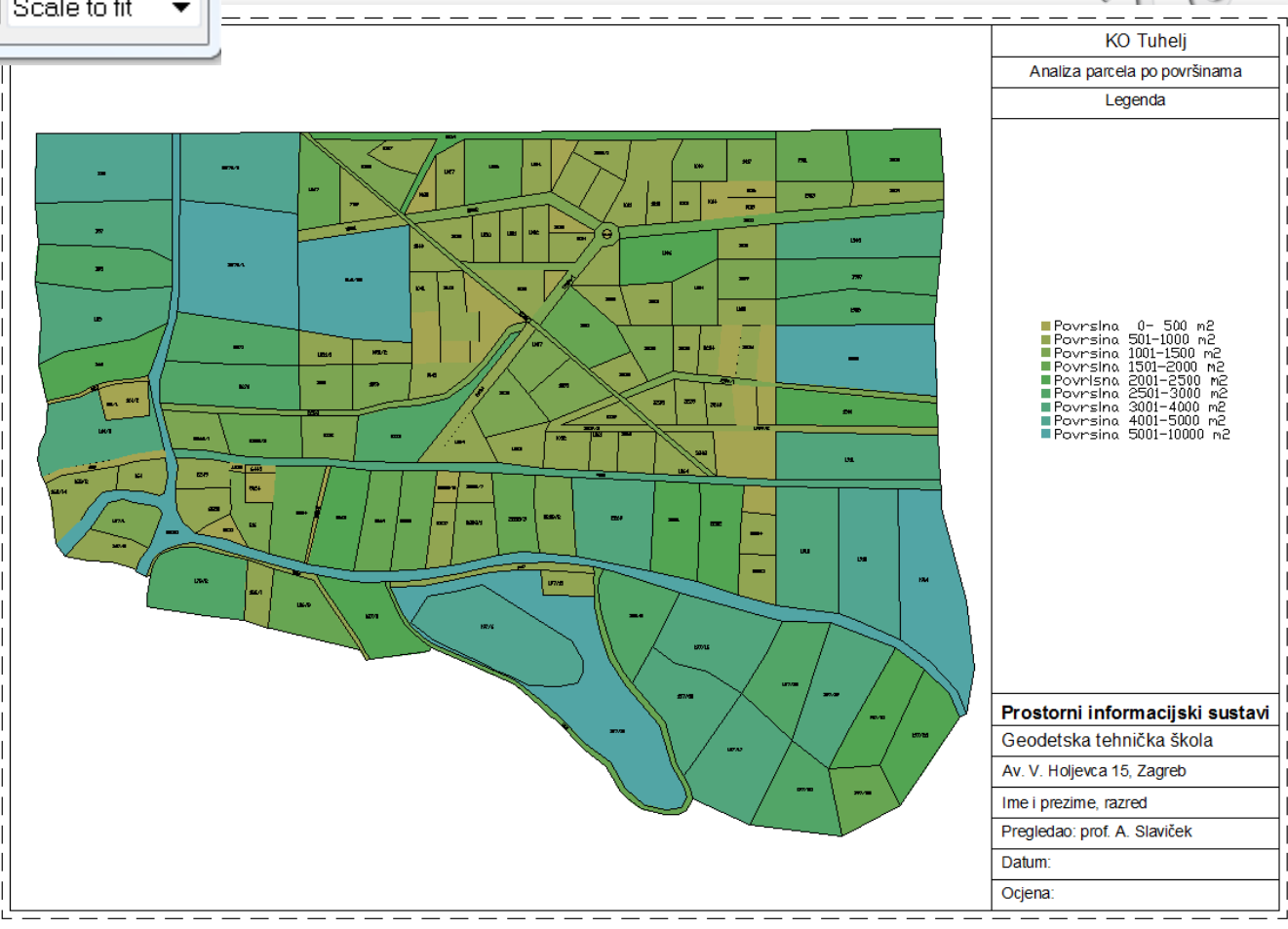
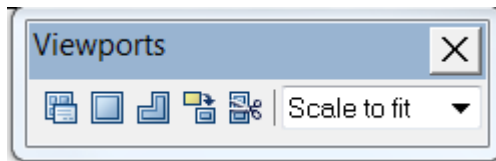




7. Izrada bloka → Umetni blok u Layout

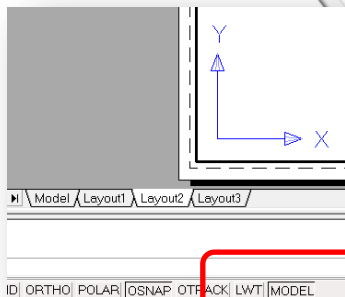
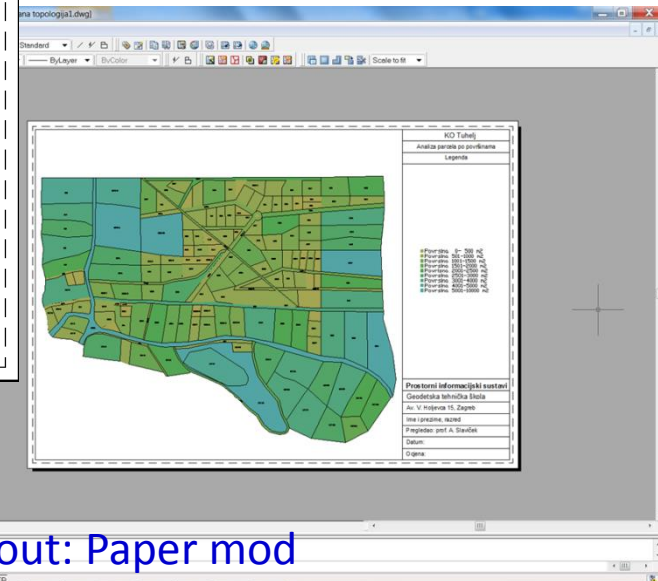
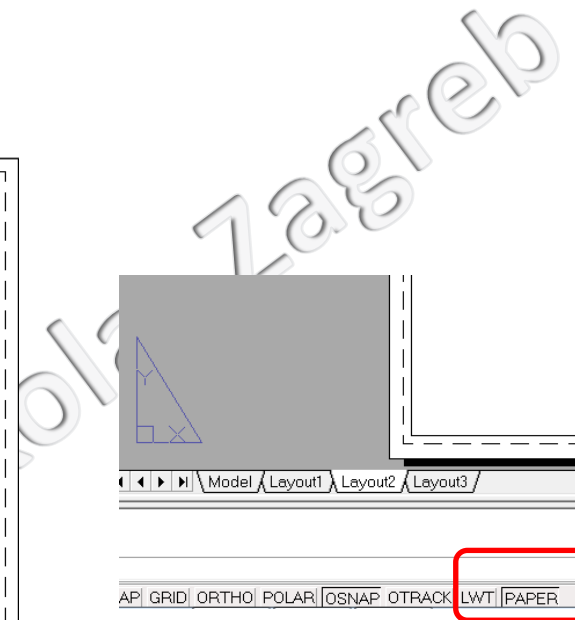
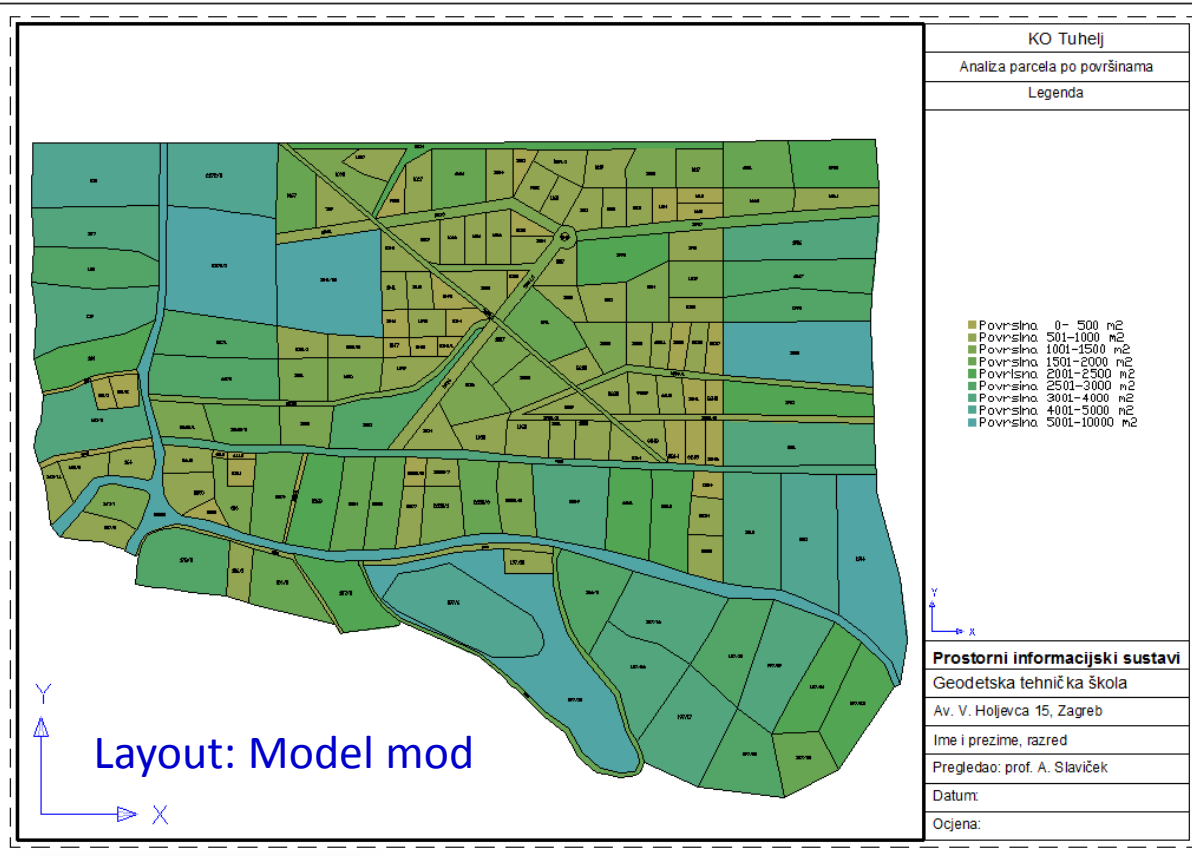


Viewports / Single Viewport (pogled – motrište)



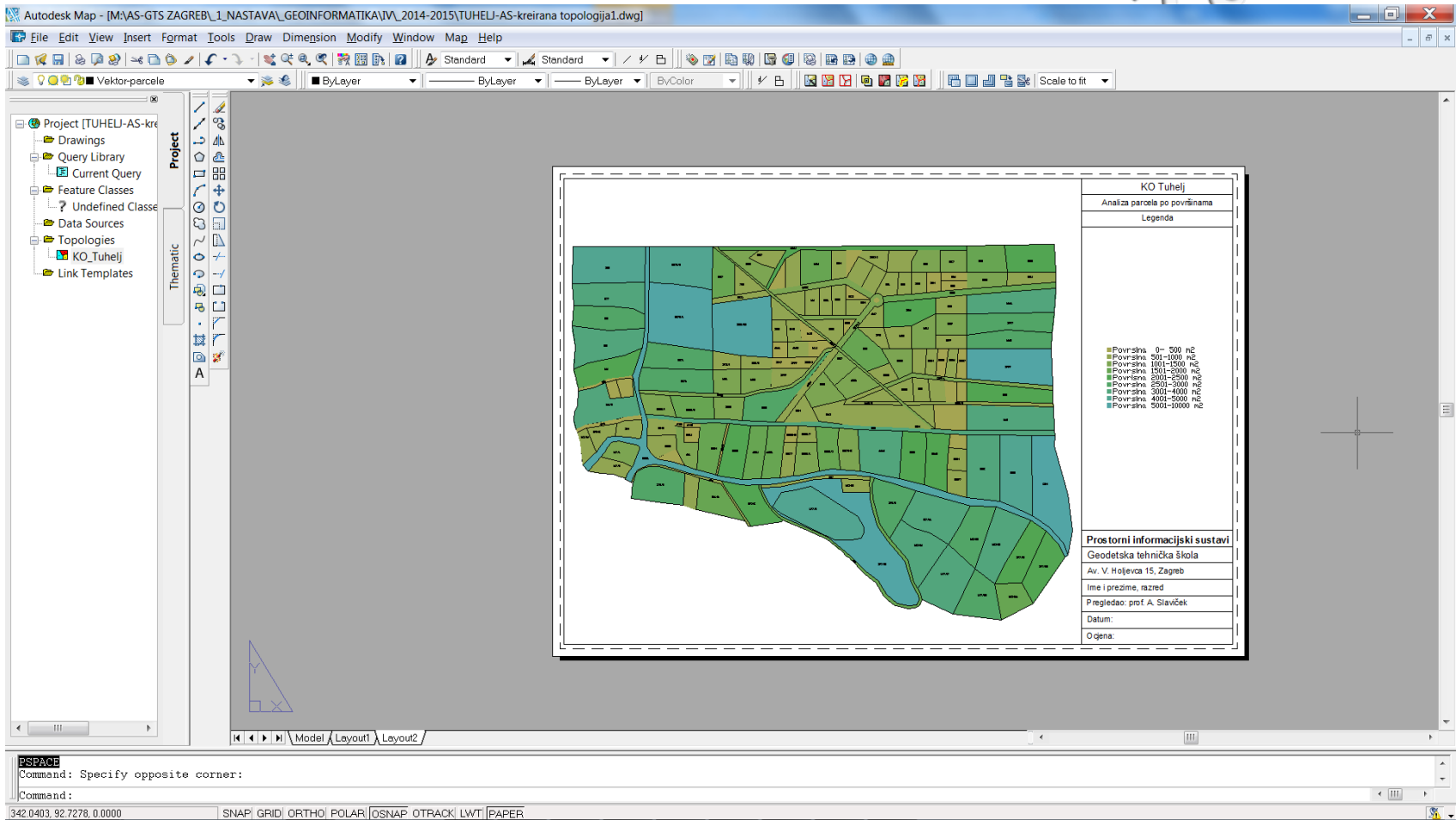
Command: ms (MSPACE)

Command: ps (PSPACE)



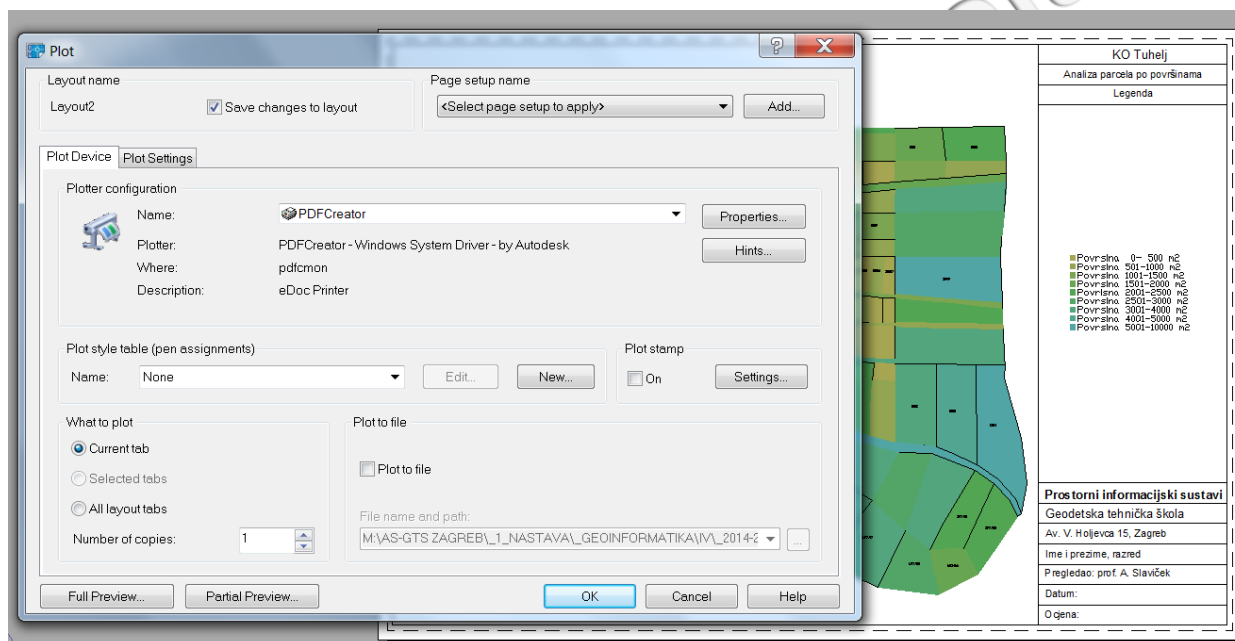
Command: ps PSPACE

Zagreb



8. Ispis (Plot) plana

File - Plot

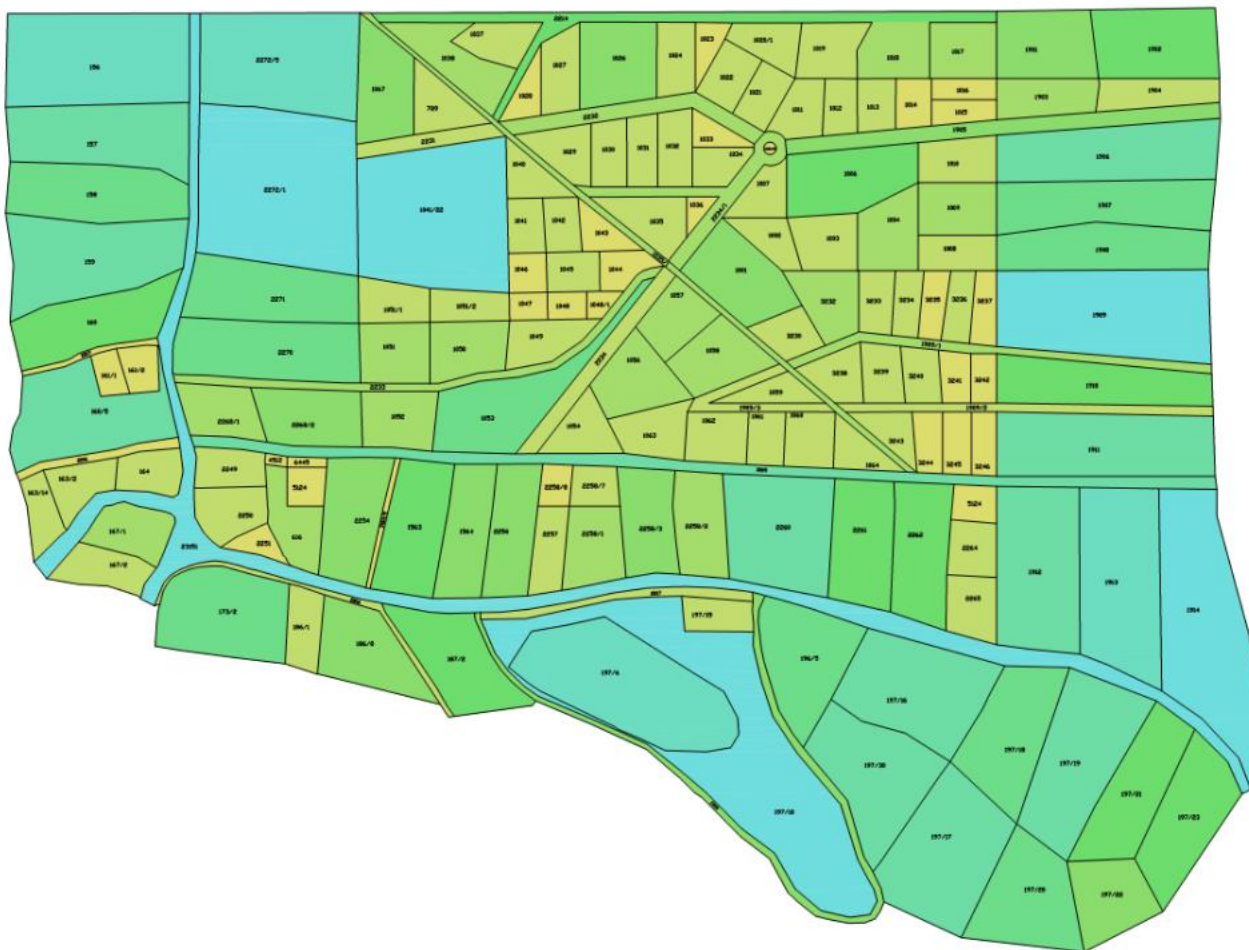


Geode

KO Tuhelj

Analiza parcela po površinama

Legenda



- Površina 0- 500 m²
- Površina 501-1000 m²
- Površina 1001-1500 m²
- Površina 1501-2000 m²
- Površina 2001-2500 m²
- Površina 2501-3000 m²
- Površina 3001-4000 m²
- Površina 4001-5000 m²
- Površina 5001-10000 m²

Prostorni informacijski sustavi

Geodetska tehnička škola

Av. V. Holjevca 15, Zagreb

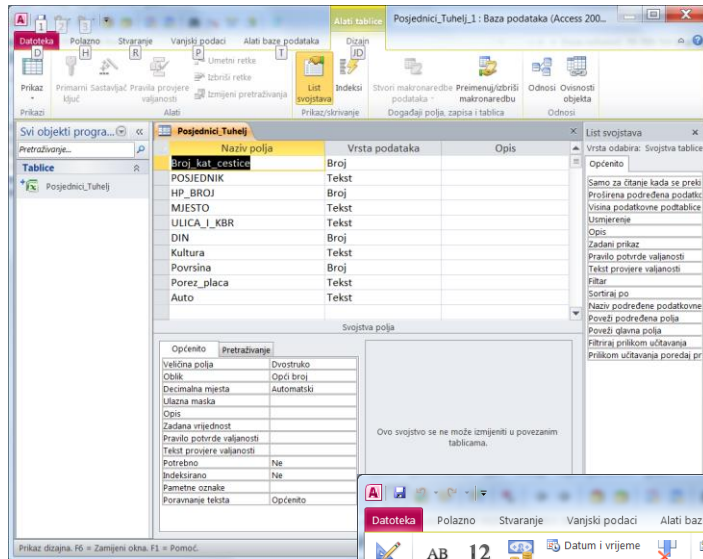
Ime i prezime, razred

Pregledao: prof. A. Slaviček

Datum:

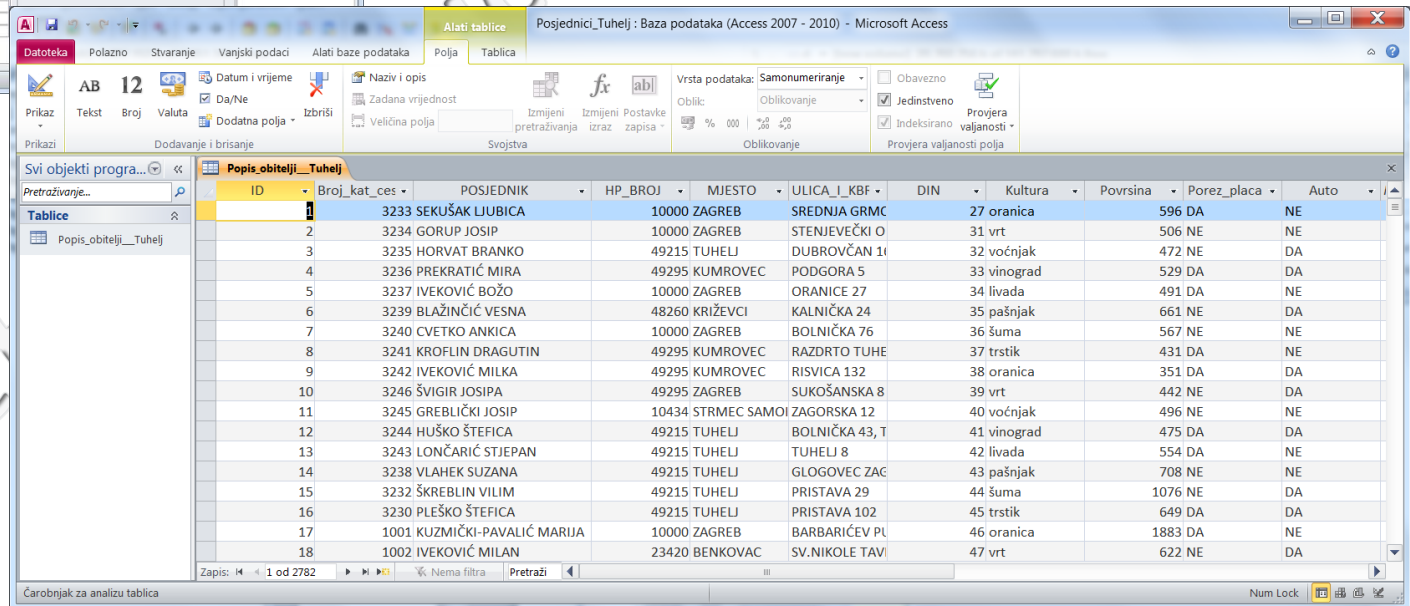
Ocjena:

9. Izrada baze podataka



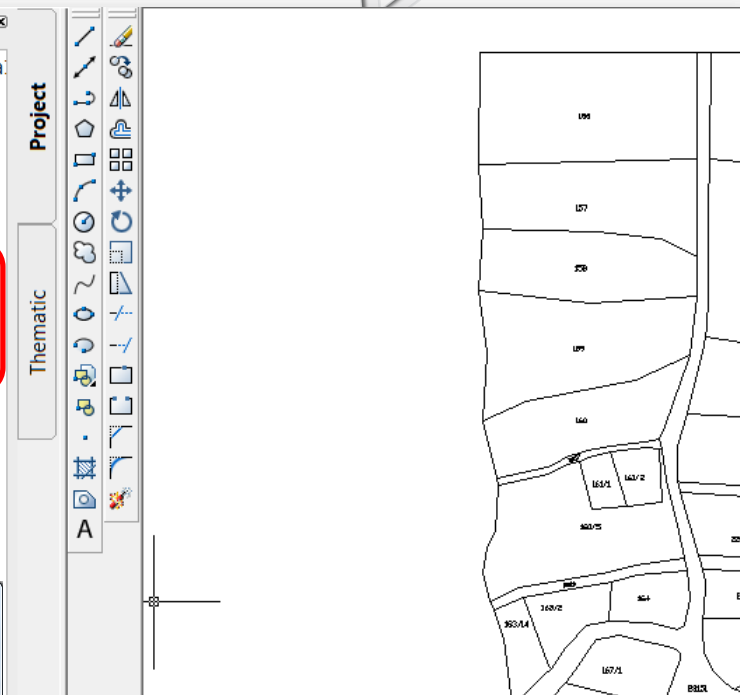
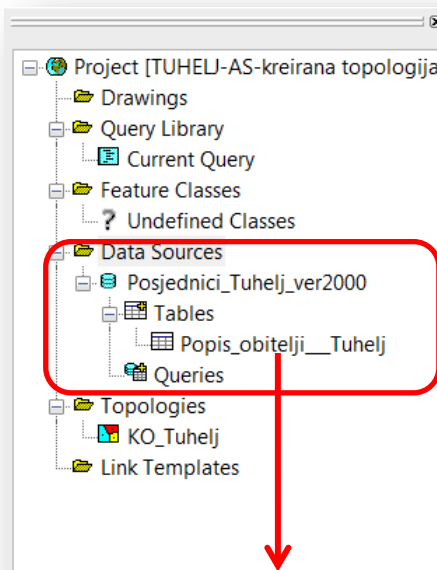
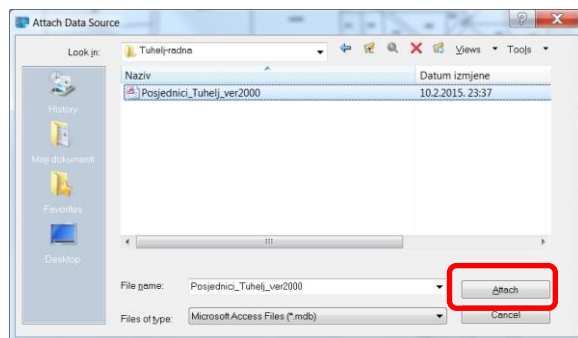
Datoteka -> Spremi i objavi

Spremi bazu podataka kao
Baza podataka programa Access 2000



10. Povezivanje katastarskog plana s bazom podataka

Map -> Database -> Data Sources -> Attach



ID	Broj_kat_cestice	POSJEDNIK	HP_BROJ	MJESTO	ULICA_I_KBR	DIN	Kultura	Povrsina	Porez_placa	Auto
1	3233	SEKUŠAK LJUBICA	10000	ZAGREB	SREDNJA GRMOŠĆICA 25	27	oranica	596.0566406	DA	NE
2	3234	GORUP JOSIP	10000	ZAGREB	STENJEVEČKI ODVOJAK 7	31	vrt	505.6015625	NE	NE
3	3235	HORVAT BRANKO	49215	TUHELJ	DUBROVČAN 162	32	voćnjak	472.4550781	NE	DA
4	3236	PREKRATIĆ MIRA	49295	KUMROVEC	PODGORA 5	33	vinograd	528.8183594	DA	DA
5	3237	IVEKOVIĆ BOŽO	10000	ZAGREB	ORANICE 27	34	livada	490.9707031	DA	NE
6	3239	BLAŽIŃIĆ VESNA	48260	KRIŽEVCI	KALNIČKA 24	35	pašnjak	660.8457031	NE	DA
7	3240	CVETKO ANKICA	10000	ZAGREB	BOLNIČKA 76	36	šuma	567.0175781	NE	NE
8	3241	KROFLIN DRAGUTIN	49295	KUMROVEC	RAZDRTO TUHELJSKO 57	37	trstik	430.9492188	DA	NE
9	3242	IVEKOVIĆ MILKA	49295	KUMROVEC	RISVIĆA 132	38	oranica	351.4765625	DA	DA
10	3246	ŠVIGIR JOSIPA	49295	ZAGREB	SUKOŠANSKA 8	39	vrt	442.0234375	NE	DA
11	3245	GREBLIČKI JOSIP	10434	STRMEC SAMOBO	ZAGORSKA 12	40	voćnjak	496.1425781	NE	NE
12	3244	HUŠKO ŠTEFICA	49215	TUHELJ	BOLNIČKA 43, TUHELJSKE T	41	vinograd	475.0058594	DA	DA

Define Link Template

Data Source: Posjednici_Tuhelj_ver2000

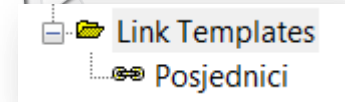
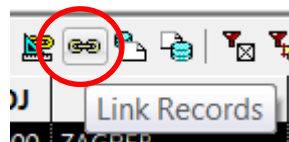
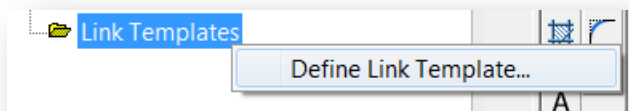
Table Name: Popis_obitelji___Tuhelj

Link Template: Posjednici

Key Selection

Column	Data Type	Key
ID	INTEGER	<input type="checkbox"/>
Broj_kat_cestice	DOUBLE PRECISION	<input checked="" type="checkbox"/>
POSJEDNIK	CHARACTER VARYL...	<input type="checkbox"/>
HP_BROJ	DOUBLE PRECISION	<input type="checkbox"/>
MJESTO	CHARACTER VARYL...	<input type="checkbox"/>
ULICA_I_KBR	CHARACTER VARYL...	<input type="checkbox"/>
DIN	DOUBLE PRECISION	<input type="checkbox"/>
Kultura	CHARACTER VARYL...	<input type="checkbox"/>
	DOUBLE PRECISION	<input type="checkbox"/>

OK Cancel Help



Data View - Popis_obitelji___Tuhelj

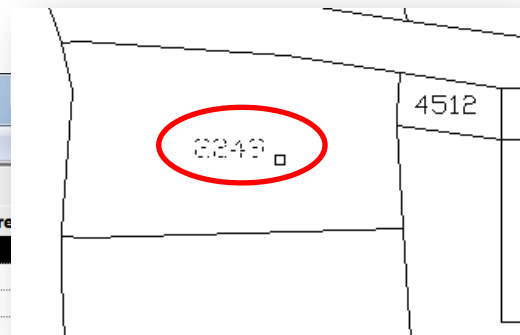
File Edit View Format Records Links Highlight Help

Link Template: Posjednici

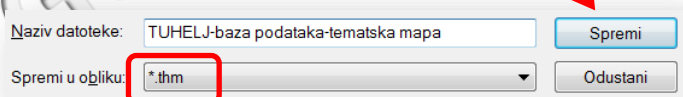
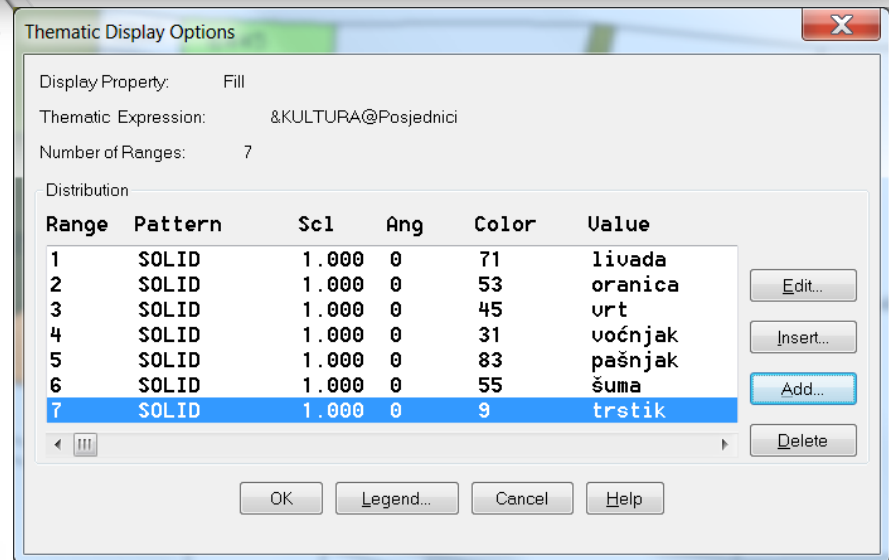
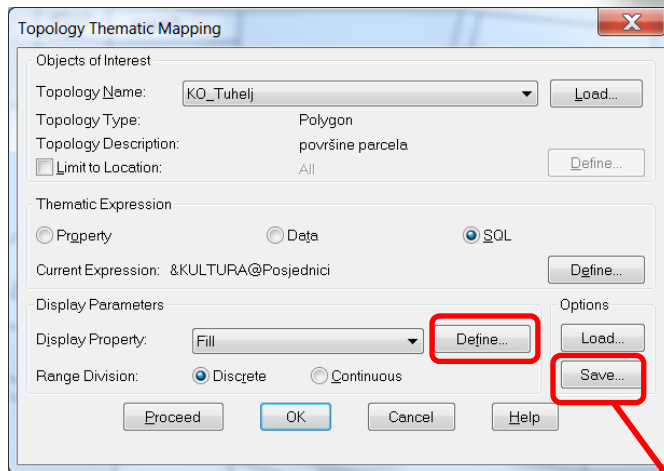
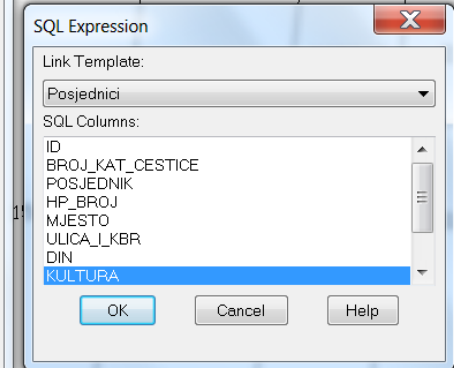
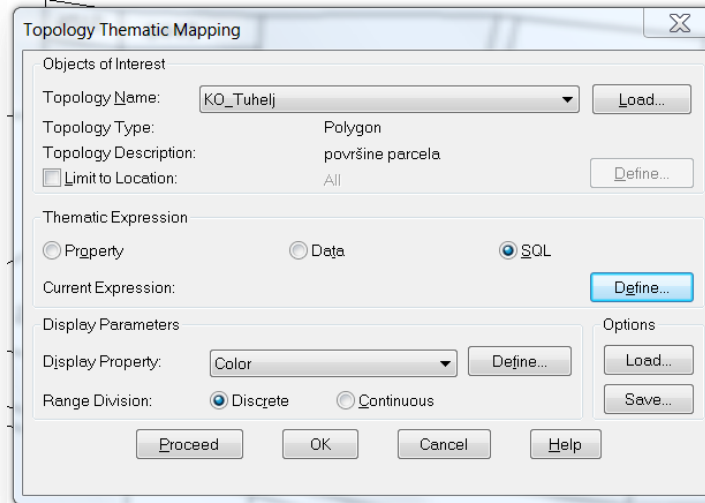
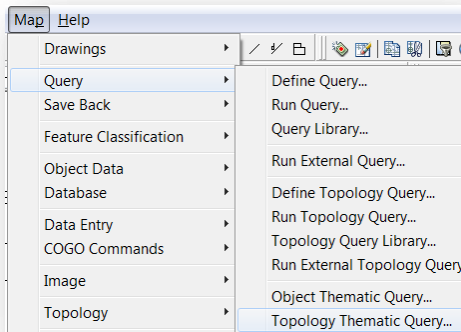
ID	Broj_kat_cestice	POSJEDNIK	HP_BROJ	MJESTO	ULICA_I_KBR	DIN	Kultura	Povrsina	Pore
1	2249	SEK UŠAK LJUBICA	10000	ZAGREB	SREDNJA GRMOŠĆICA 25	27	oronica	596.0566406	DA
2	2250	GORUP JOSIP	10000	ZAGREB	STENJEVEČKI ODVOJAK 7	31	vrt	505.6015625	NE
3	2251	HORVAT BRANKO	49215	TUHELJ	DUBROVČAN 162	32	voćnjak	472.4550781	NE
4	4512	PREKRATIĆ MIRA	49295	KUMROVEC	PODGORA 5	33	vinograd	528.8183594	DA
5	6445	IVEKOVIĆ BOŽO	10000	ZAGREB	ORANICE 27	34	livada	490.9707031	DA
6	5124	BLAŽINIĆ VESNA	48260	KRIŽEVCI	KALNIČKA 24	35	pašnjak	660.8457031	NE
7	616	CVETKO ANKICA	10000	ZAGREB	BOLNIČKA 76	36	šuma	567.0175781	NE
8	2254	KROFLIN DRAGUTIN	49295	KUMROVEC	RAZDRTO TUHELJSKO 57	37	trstik	430.9492188	DA
9	1563	IVEKOVIĆ MILKA	49295	KUMROVEC	RISVIĆA 132	38	oronica	351.4765625	DA
10	3246	ŠVIGIR JOSIPA	49295	ZAGREB	SUKOŠANSKA 8	39	vrt	442.0234375	NE
11	3245	GREBLIČKI JOSIP	10434	STRMEC SAMOBO	ZAGORSKA 12	40	voćnjak	496.1425781	NE
12	3244	HUŠKO ŠTEFICA	49215	TUHELJ	BOLNIČKA 43, TUHELJSKE T	41	vinograd	475.0058594	DA

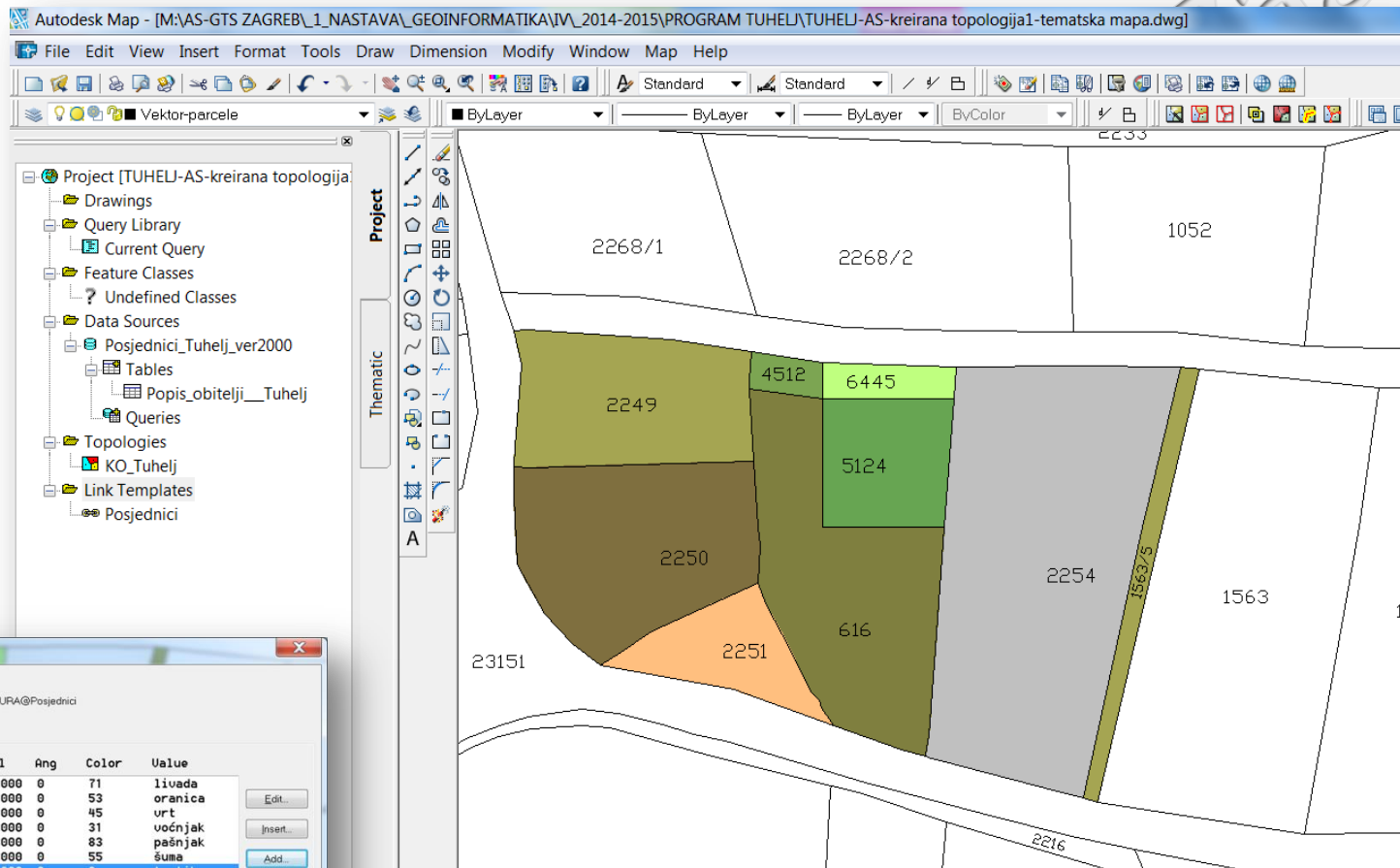
Record 1 of 2782

HIGHLIGHT NONE



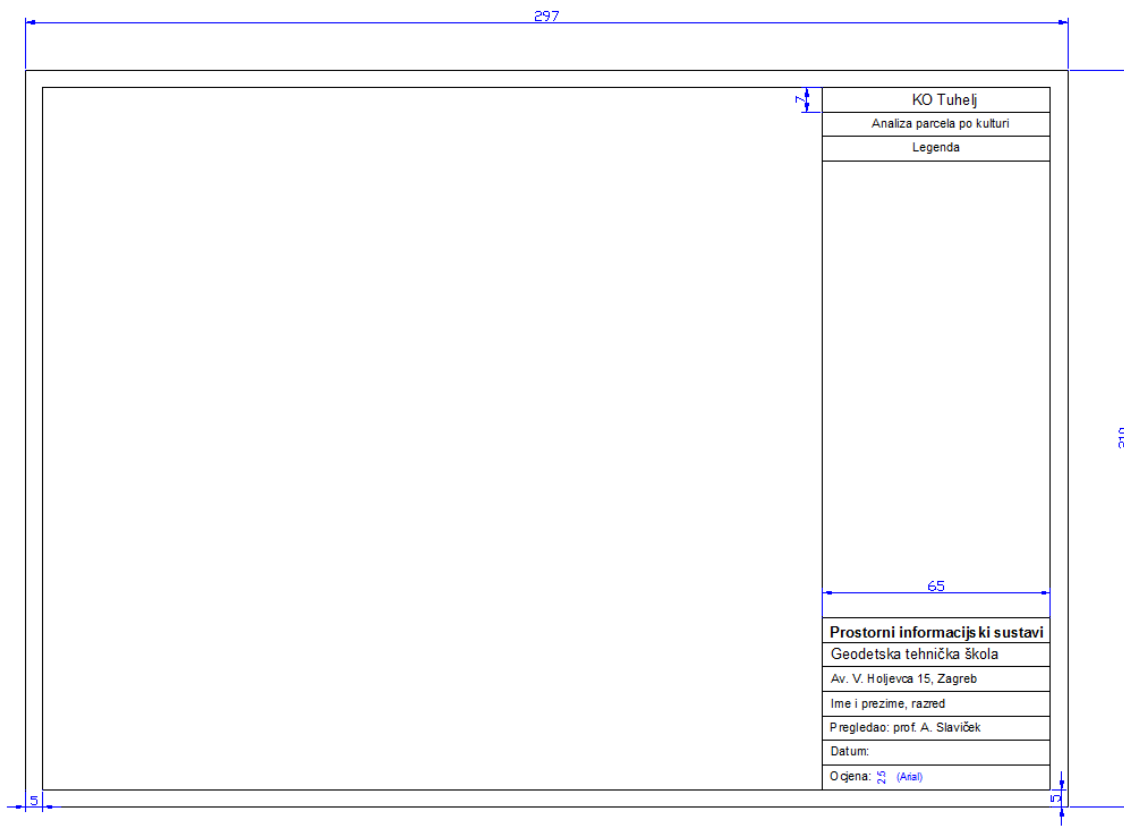
11. Analiza – izrada tematske mape





Kreiraj legendu
Umetni blok u Layout
Namjesti plan u Layout
Ispis (plot) plana

Zagreb



Geo

KO Tuhelj

Analiza parcela po kulturi

Legenda



- livada
- oranica
- vrt
- voćnjak
- pašnjak
- šuma
- trstik
- vinograd
- cesta
- vode

Prostorni informacijski sustavi

Geodetska tehnička škola

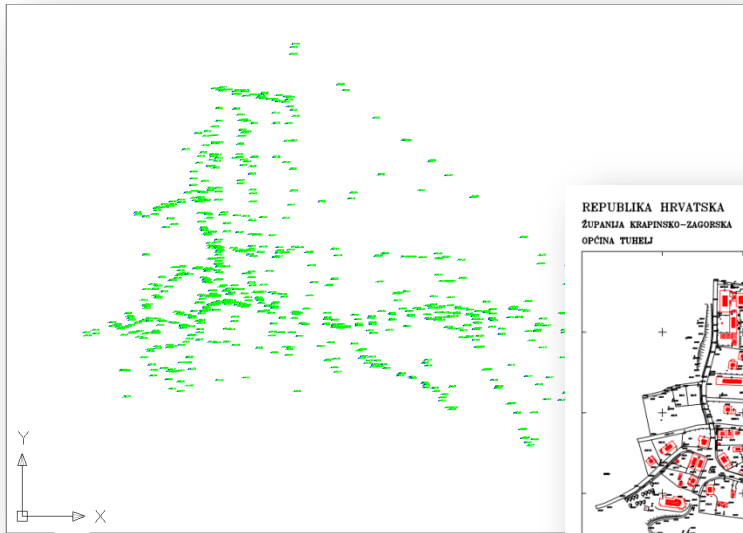
Av. V. Holjevca 15, Zagreb

Ime i prezime, razred

Pregledao: prof. A. Slaviček

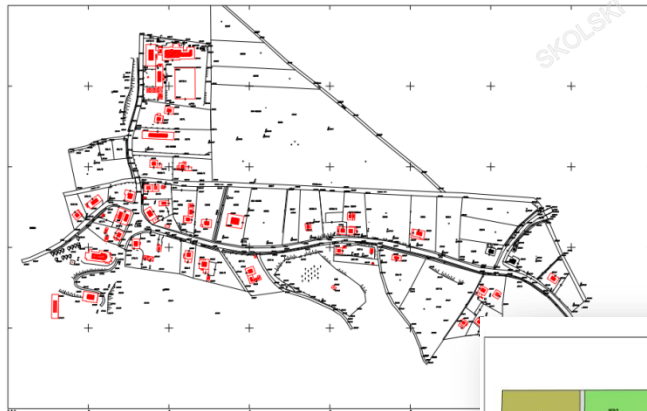
Datum:

Ocjena:

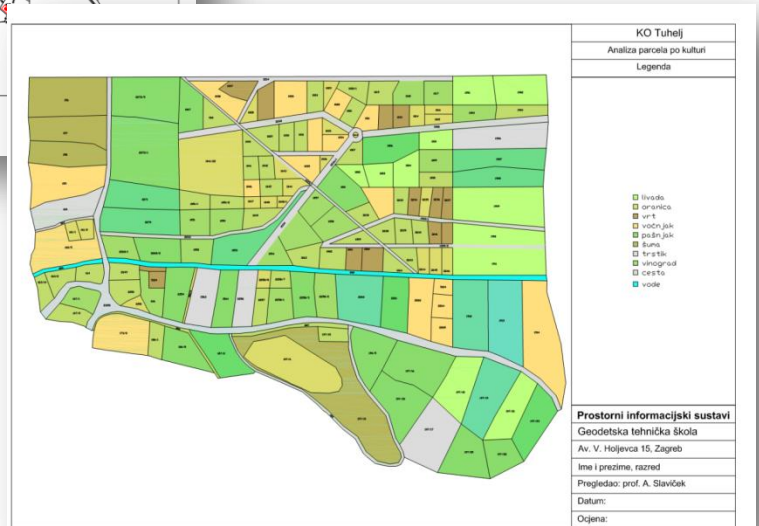


REPUBLIKA HRVATSKA
 ŽUPANIJA KRAPINSKO-ZAGORSKA
 OPĆINA TUHELJ

TUHELJ-CENTAR



MJERILO
 1:1000



Prostorni informacijski sustavi
 Geodetska tehnička škola
 Av. V. Holjevca 15, Zagreb
 Ime i prezime, razred
 Pregledao: prof. A. Slaviček
 Datum:
 Ocjena:

Geodetska

SKOLSKI PRILOG, Zagreb