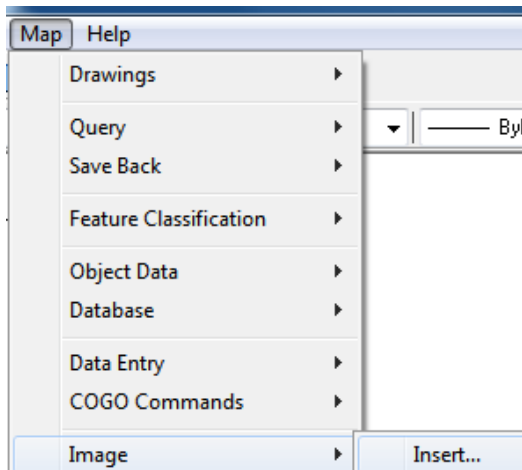


ZIS 4

Autodesk Map

Umetanje slike (rastera): Map – Image – Insert...

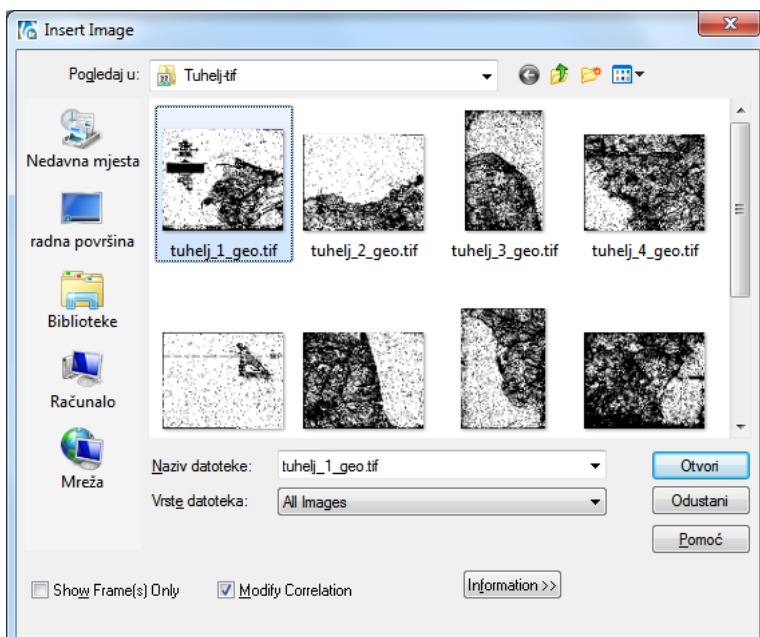
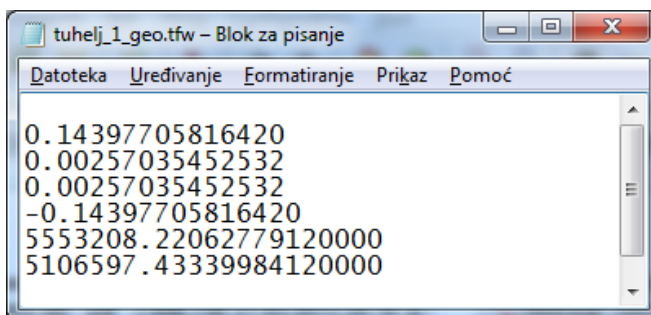


Datoteke:

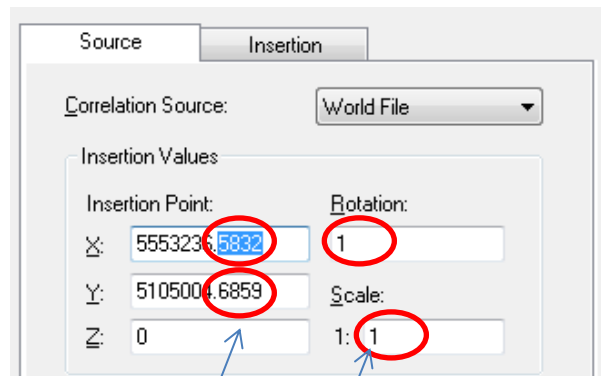
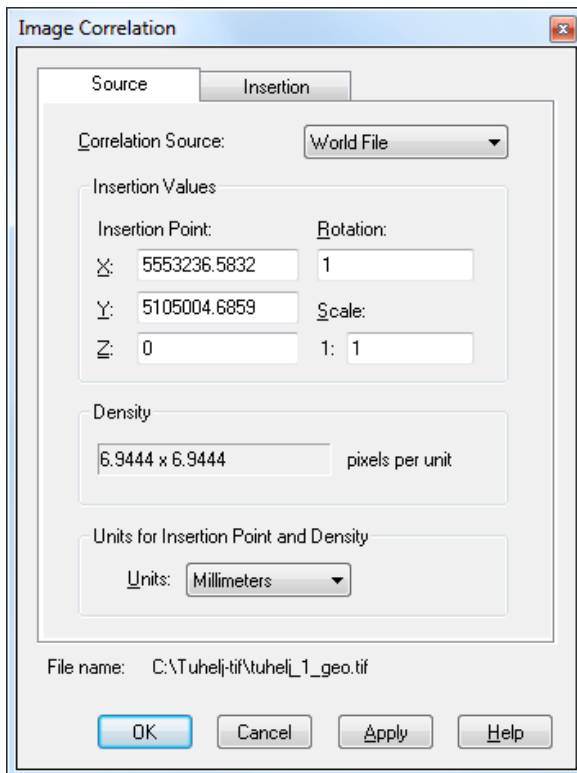
	tuhelj_1_geo	tfw	228
	tuhelj_1_geo	tif	548.212

TFW je ekstenzija datoteke koja se koristi za obične tekstualne datoteke koje pohranjuju X i Y veličine piksela, informacije o rotaciji, i koordinate za plan ili kartu koja se pohranjuje kao TIFF slika u GIS aplikacijama.

TFW datoteka mora biti spremljena u istom direktoriju kao i plan ili karta u TIFF formatu.



Otvori



X: 55553236. **dn i mjesec rođenja** (npr.2406, 1909)

Y: 5105004. **dn i mjesec rođenja**

npr:

Rotation: 1.2406

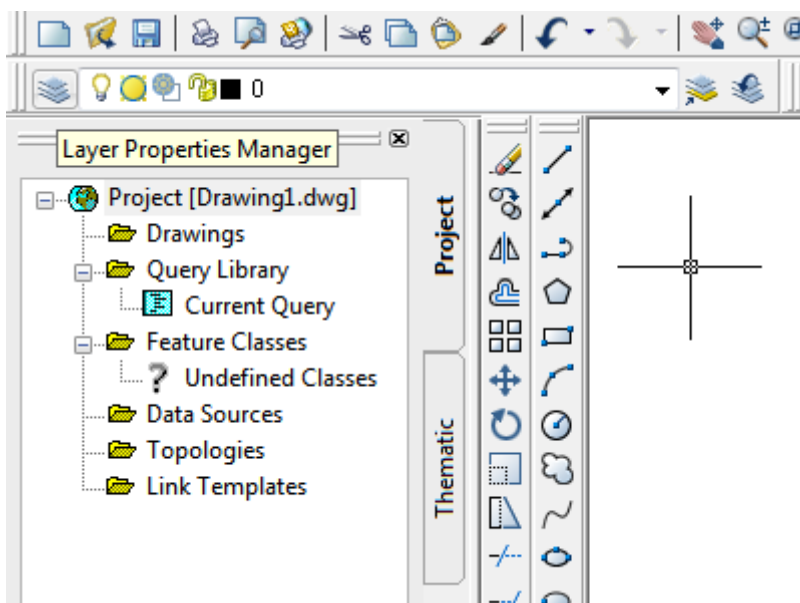
Scale: 1.2406

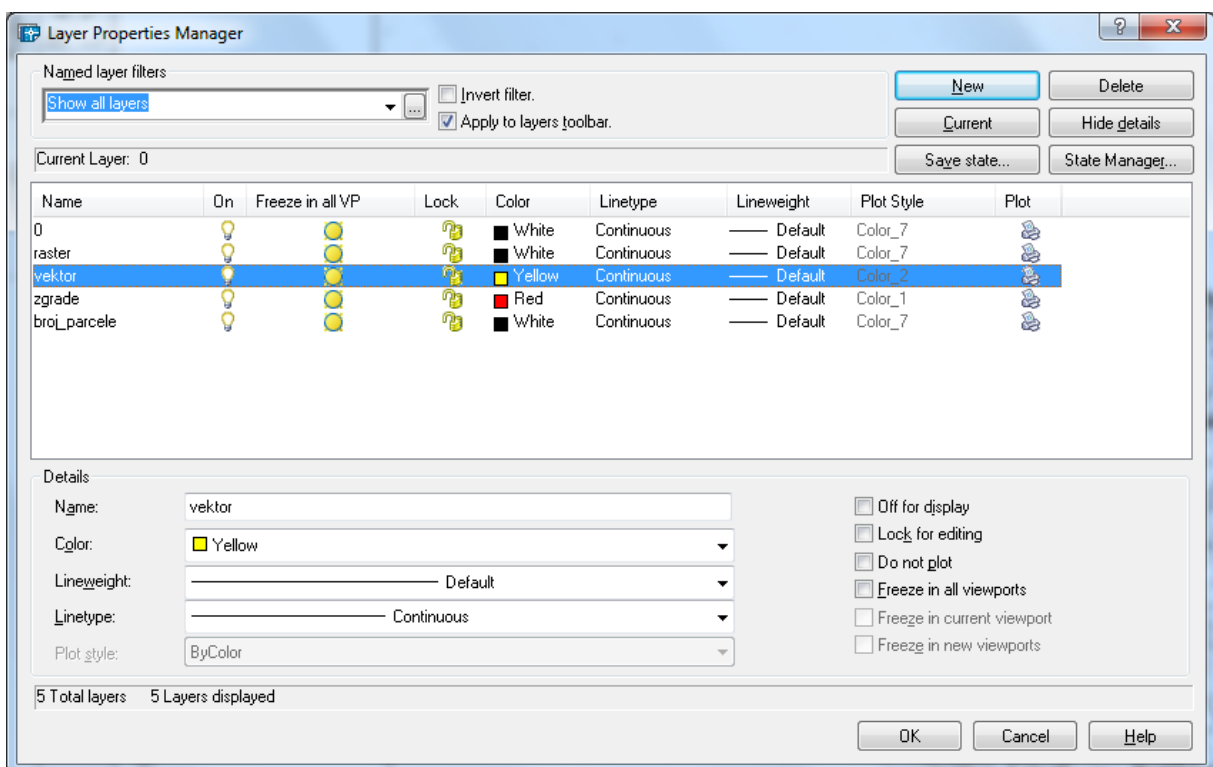
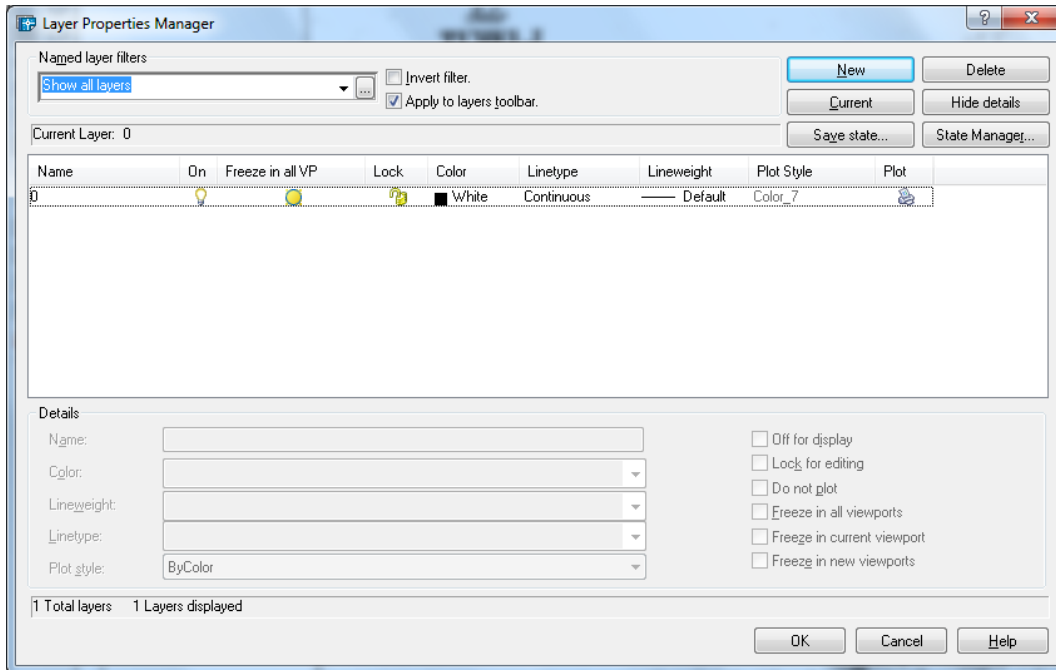
Apply

OK

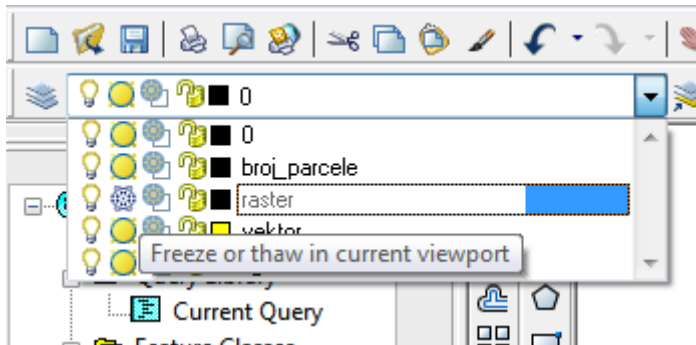
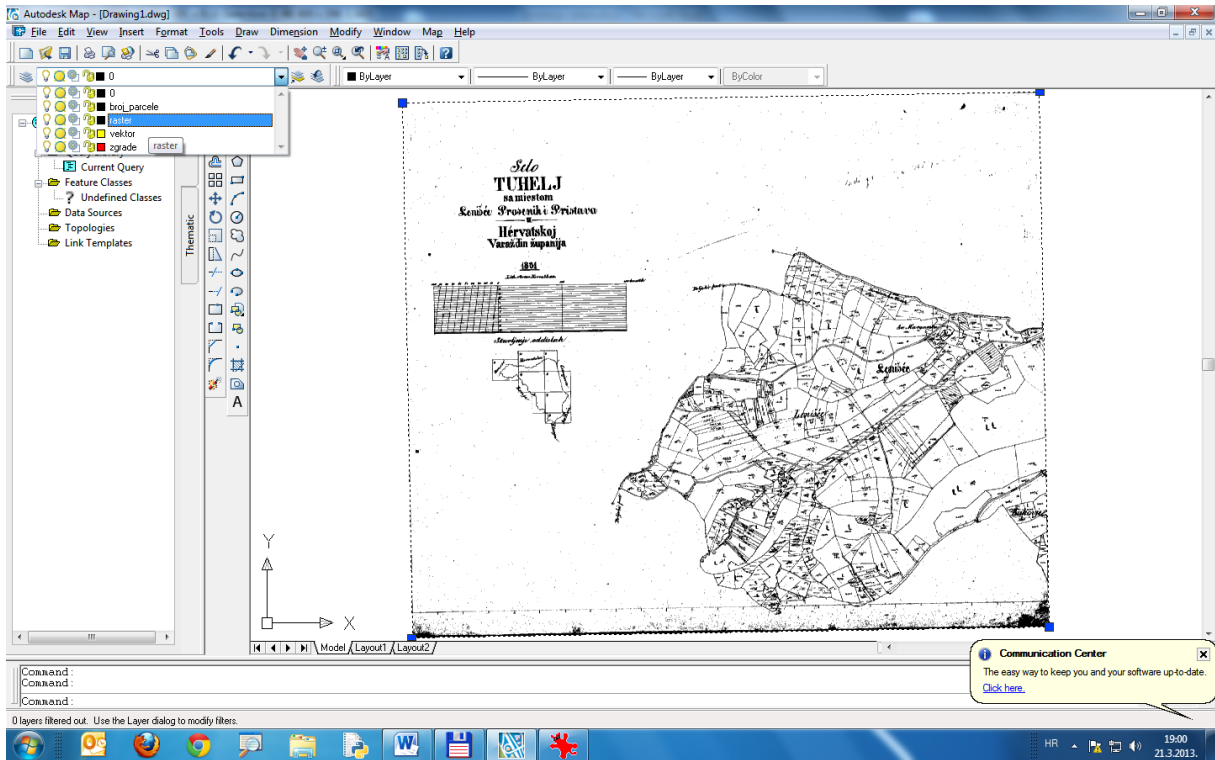
Command: zoom ENTER

e ENTER

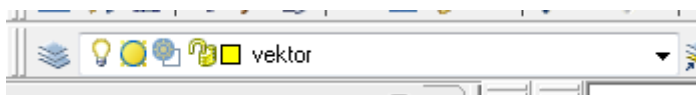




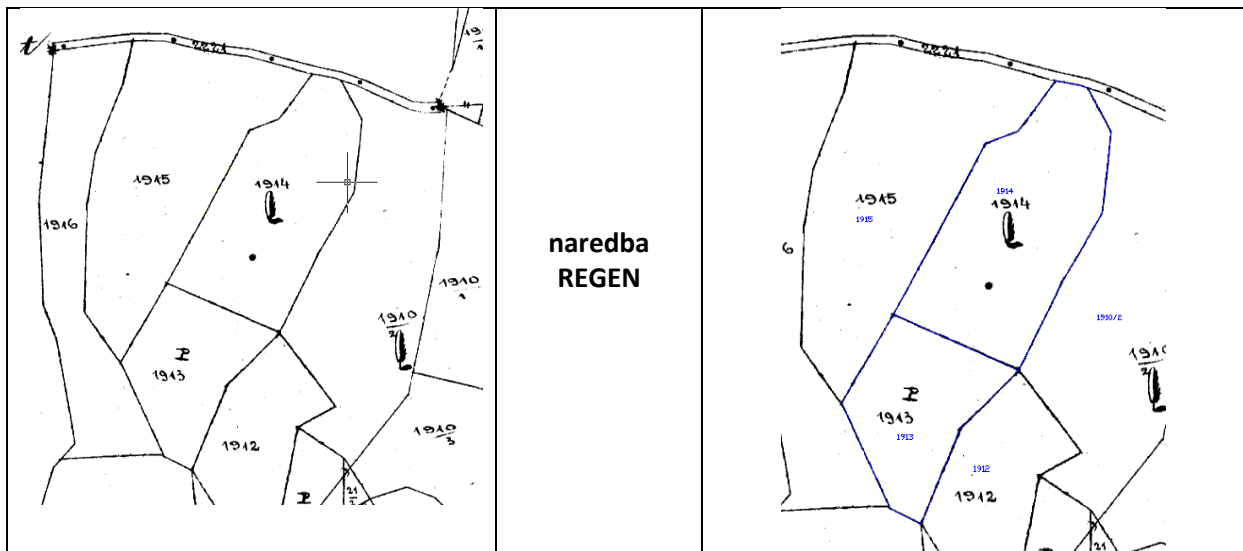
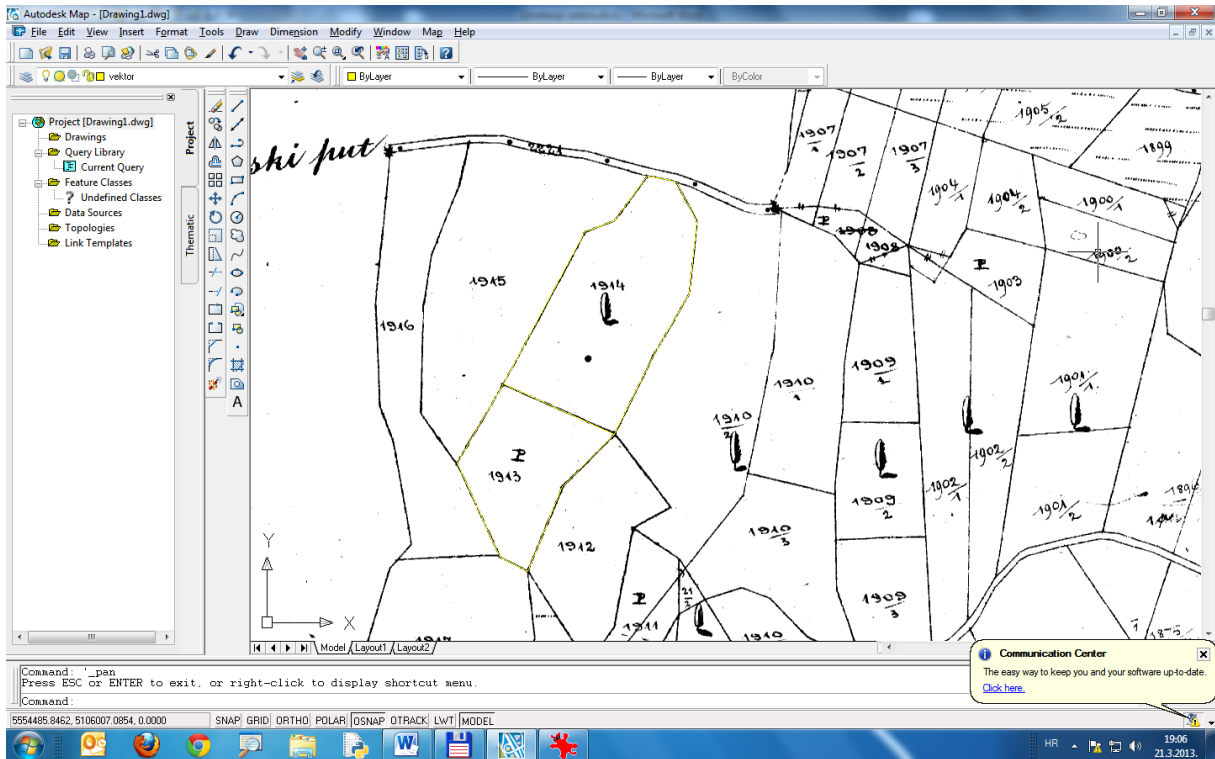
Prebacivanje rastera na razinu (layer): Raster



Trenutna razina (layer)



Vektorizacija - postupak kojim se od rasterske slike dobiva vektorska.



Razina (layer): broj_parcele

Command: dtext

Current text style: "Standard" Text height: 2.5000

Specify start point of text or [Justify/Style]:

Specify height <2.5000>: 2

Specify rotation angle of text <0>:

Enter text: 1915

Enter text: 1916

Enter text: 1913

Enter text: 1914

Enter text: 1910/2

Razina (layer): zgrade